

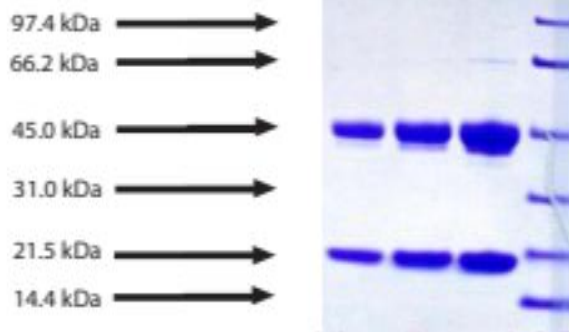
HP

Native Human Haptoglobin Phenotype 2-2

Catalog No.	CSI19771A CSI19771B	Quantity:	1.0 mg 10 mg
Alternate Names:	Haptoglobin, Hp 2-2, zonulin		
Description:	<p>Haptoglobin, in its simplest form, consists of two alpha and two beta chains, connected by disulfide bridges. The chains originate from a common precursor protein, which is proteolytically cleaved during protein synthesis. Hp exists in two allelic forms in the human population, so-called Hp1 and Hp2. Three phenotypes of Hp, therefore, are found in humans: Hp1-1, Hp2-1, and Hp2-2. Hp of different phenotype have been shown to bind hemoglobin with different affinities, with Hp2-2 being the weakest binder. Haptoglobin 2-2 (Hp 2-2) is the least effective of the three haptoglobin phenotypes in binding free hemoglobin and therefore provides less antioxidant benefits than Hp 1-1. Hp 2-2 is associated with renal failure, familial epilepsy, hypertension, atherosclerosis and coronary heart diseases. Individuals who are phenotype 2-2 have the lowest concentration of haptoglobin in plasma.</p>		
UniProt ID:	P00738		
Gene ID:	3240		
Concentration:	Lot specific, prior to lyophilization		
Source:	Human plasma		
Molecular Weight:	170-900 kDa		
Appearance:	Lyophilized from a salt-free solution		
Purity:	≥ 95% by SDS-PAGE, no visible alpha-1 light chain		
Extinction Coefficient:	$E^{0.1\%}_{280\text{nm}} = 1.20$		
Reconstitution:	<p>Centrifuge vial prior to opening. Reconstitute with deionized water to the original volume followed by gentle mixing. Allow a few minutes for complete reconstitution. Do not vortex.</p>		
Storage & Stability:	<p>Store as supplied at -20°C to -80°C for up to 1 year. Upon reconstitution, prepare aliquots (>20 µl) and store at -20°C to -80°C. Avoid repeated freeze-thaw cycles.</p>		
Infectious Disease Statement:	<p>Prepared from plasma shown to be non reactive for HBsAg, anti-HCV, anti-HBc, and negative for anti-HIV 1 & 2 by FDA approved tests.</p>		



SDS-PAGE 4-12% Bis-Tris-HCl NuPAGE reduced



NOT FOR HUMAN USE. FOR RESEARCH ONLY. NOT FOR DIAGNOSTIC OR THERAPEUTIC USE.



Cell Sciences®
65 Parker Street
Unit 11
Newburyport, MA 01950

Toll Free: 888-769-1246
Phone: 978-572-1070
Fax: 978-992-0298

E-mail: info@cellsciences.com
Website: www.cellsciences.com