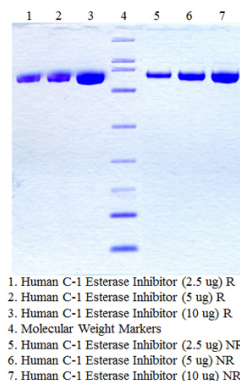


## SERPING1

### Native Human C-1 Inhibitor, Plasma

<b>Catalog No.</b>	CSI19791A CSI19791B	<b>Quantity:</b>	1.0 mg 5.0 mg
<b>Alternate Names:</b>	Plasma protease C1 inhibitor, C1Inh. C1 esterase inhibitor, Serpin G1, C1 inhibiting factor		
<b>Description:</b>	A single chain glycoprotein which inhibits C1, C1r, C1s, plasma kallikrein, Factors XIa, XIIa, and plasmin. Present in plasma at 16-33 mg per 100 ml. C1 inhibitor deficiency is a rare condition resulting in facial swelling and abdominal cramping. Usually the condition is hereditary, though it may also occur when the C1EI is non-functional.		
<b>UniProt ID:</b>	P05155		
<b>Gene ID:</b>	710		
<b>Source:</b>	Human plasma		
<b>Molecular Weight:</b>	100 kDa		
<b>Formulation:</b>	0.02M Potassium Phosphate, 0.25M NaCl, pH7.0		
<b>Purity:</b>	>95% by SDS-PAGE analysis		
<b>Concentration:</b>	≥ 1.0 mg/ml, lot specific		
<b>Extinction Coefficient:</b>	$E^{0.1\%}_{280nm} = 0.4$		
<b>Storage &amp; Stability:</b>	Store at -80°C for up to 1 year. Upon initial thaw, prepare working aliquots and store at -80°C. <b>Avoid repeated freeze-thaw cycles.</b>		
<b>Certification:</b>	Prepared from plasma shown to be non reactive for HbsAG, anti-HCV, anti-HBc, and negative for anti-HIV 1 & 2 by FDA approved tests.		



**NOT FOR HUMAN USE. FOR RESEARCH ONLY. NOT FOR DIAGNOSTIC OR THERAPEUTIC USE.**



**Cell Sciences®**  
 65 Parker Street  
 Unit 11  
 Newburyport, MA 01950

Toll Free: 888-769-1246  
 Phone: 978-572-1070  
 Fax: 978-992-0298

E-mail: [info@cellsciences.com](mailto:info@cellsciences.com)  
 Website: [www.cellsciences.com](http://www.cellsciences.com)