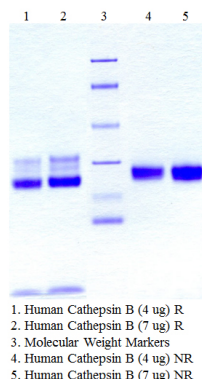


## CTSB

### Native Human Cathepsin B, Liver

<b>Catalog No.</b>	CSI19792A CSI19792B	<b>Quantity:</b>	25 µg 100 µg
<b>Alternate Names:</b>	APPS, CPSB, APP secretase, amyloid precursor protein secretase, cathepsin B1, cysteine protease, preprocathepsin B		
<b>Description:</b>	Cathepsin B, a cysteine proteinase, is located in lysosomes and is involved in tissue degradation and restructuring. Specifically, cathepsin B is believed to be involved in the intracellular digestion of extracellular proteins taken up by endocytosis.		
<b>UniProt ID:</b>	P07858		
<b>Gene ID:</b>	1508		
<b>Source:</b>	Human liver		
<b>Molecular Weight:</b>	27.5 kDa		
<b>Formulation:</b>	Solution of 50 mM Sodium Acetate, 1 mM EDTA, pH 5.0.		
<b>Purity:</b>	>95% by SDS-PAGE analysis		
<b>Concentration:</b>	≥ 1.0 mg/ml, lot specific		
<b>Specific Activity:</b>	≥ 200 units/mg. One unit is defined as the amount of enzyme that hydrolyzes one µmole of Z-Arg-Arg-beta-naphthylamide per minute at 40°C, using 100 mM Na/K phosphate, pH 6.0, with 1.33 mM EDTA and 2 mM DTT as the activation buffer.		
<b>Storage &amp; Stability:</b>	Store at -80°C for up to 1 year. Upon initial thaw, prepare working aliquots and store at -80°C. <b>Avoid repeated freeze-thaw cycles.</b>		
<b>Certification:</b>	Prepared from tissue shown to be non reactive for HbsAG, anti-HCV, anti-HBc, and negative for anti-HIV 1 & 2 by FDA approved tests.		



**NOT FOR HUMAN USE. FOR RESEARCH ONLY. NOT FOR DIAGNOSTIC OR THERAPEUTIC USE.**