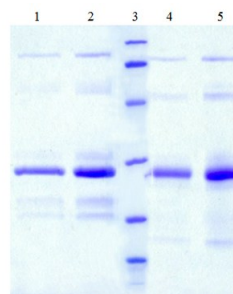


CTSH

Native Human Cathepsin H, Liver

Catalog No.	CSI19794A CSI19794B	Quantity:	25 µg 100 µg
Alternate Names:	ACC-4, ACC-5, CPSB, aleurain, cathepsin B3, cathepsin BA		
Description:	A more basic protein than Cathepsin B or L. Functions as both an aminopeptidase and endopeptidase. Cathepsin H, like cathepsin L and B, is involved in the catabolism of proteins in the lysosomal system.		
UniProt ID:	P09668		
Gene ID:	1512		
Source:	Human liver		
Molecular Weight:	28 kDa		
Formulation:	Frozen liquid in a buffer of 20 mM Sodium Acetate, 0.1 M NaCl, 1 mM EDTA, pH 4.5.		
Purity:	>95% by SDS-PAGE		
Concentration:	≥ 1.0 mg/ml, lot specific		
Specific Activity:	≥ 1 unit/mg. One unit is defined as the amount of enzyme that hydrolyzes one µmole of L-arginine-beta-naphthylamide per minute at 40°C using 75 mM potassium phosphate, pH 6.8, with 1 mM EDTA and 3 mM cysteine as the activation buffer.		
Storage & Stability:	Store at -80°C for up to 1 year. Upon initial thaw, prepare working aliquots and store at -80°C. Avoid repeated freeze-thaw cycles.		
Certification:	Prepared from tissue shown to be non reactive for HbsAG, anti-HCV, anti-HBc, and negative for anti-HIV 1 & 2 by FDA approved tests.		



1. Human Cathepsin H (4 ug) R
2. Human Cathepsin H (7 ug) R
3. Molecular Weight Markers
4. Human Cathepsin H (4 ug) NR
5. Human Cathepsin H (7 ug) NR

NOT FOR HUMAN USE. FOR RESEARCH ONLY. NOT FOR DIAGNOSTIC OR THERAPEUTIC USE.



Cell Sciences®
65 Parker Street
Unit 11
Newburyport, MA 01950

Toll Free: 888-769-1246
Phone: 978-572-1070
Fax: 978-992-0298

E-mail: info@cellsciences.com
Website: www.cellsciences.com