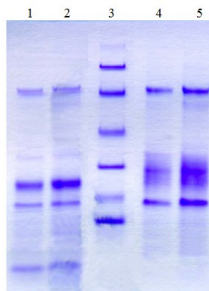


CTSL

Native Human Cathepsin L1, Liver

Catalog No.	CSI19795A CSI19795B	Quantity:	25 µg 100 µg
Alternate Names:	Major excreted protein, MEP		
Description:	<p>The most powerful of the lysosomal proteases. Cathepsin L1 has a higher specific activity than cathepsin B and H in the degradation of a variety of physiological protein substrates, but has little activity on Z-Arg-Arg-NHMec, and no peptidyl-dipeptidase activity. Specificity close to that of papain.</p> <p>The level of cathepsin L1 is a strong predictor of relapse and survival following treatment of a primary breast tumor.</p>		
UniProt ID:	P07711		
Gene ID:	1514		
Source:	Human liver		
Molecular Weight:	25-29 kDa		
Formulation:	Solution of 20 mM Malonate, 0.4M NaCl, 1 mM EDTA, pH 5.5		
Purity:	>95% by SDS-PAGE analysis		
Concentration:	≥ 1.0 mg/ml, lot specific		
Specific Activity:	<p>≥ 1 unit per mg protein. One unit is defined as the amount of enzyme that hydrolyzes one micromole of Z-Phe-Arg-AFC per minute at 25°C using 400 mM Na Acetate, pH 5.5 with 4 mM EDTA and 8 mM DTT as the activation buffer in the presence of Brij.</p>		
Storage & Stability:	Store at -80°C for up to 1 year. Upon initial thaw, prepare working aliquots and store at -80°C. Avoid repeated freeze-thaw cycles.		
Certification:	Prepared from tissue shown to be non reactive for HbsAG, anti-HCV, anti-HBc, and negative for anti-HIV 1 & 2 by FDA approved tests.		



1. Human Cathepsin L (4 ug) NR
2. Human Cathepsin L (7 ug) NR
3. Molecular Weight Markers
4. Human Cathepsin L (4 ug) R
5. Human Cathepsin L (7 ug) R

NOT FOR HUMAN USE. FOR RESEARCH ONLY. NOT FOR DIAGNOSTIC OR THERAPEUTIC USE.



Cell Sciences®
65 Parker Street
Unit 11
Newburyport, MA 01950

Toll Free: 888-769-1246
Phone: 978-572-1070
Fax: 978-992-0298

E-mail: info@cellsciences.com
Website: www.cellsciences.com