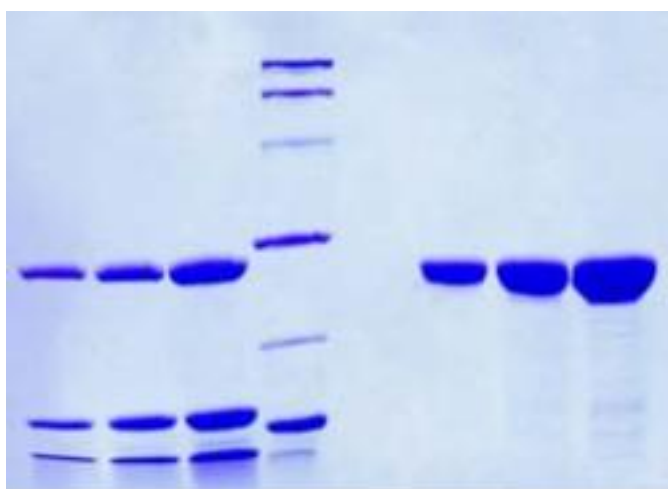


CTRC

Native Human Chymotrypsin-C, Pancreas

Catalog No.	CSI19797A CSI19797B	Quantity:	100 µg 1.0 mg
Alternate Names:	Caldecrin, Elastase 4		
Description:	The digestive enzyme chymotrypsin protects against pancreatitis by promoting degradation of trypsinogen, thereby curtailing potentially harmful trypsinogen activation. Loss-of-function variants in <i>CTRC</i> increase the risk for chronic pancreatitis. Increased values of this enzyme and/or its zymogen have been found in patients with cystic fibrosis.		
UniProt ID:	Q99895		
Source:	Human pancreas		
Molecular Weight:	25 kDa		
Formulation:	Lyophilized from Salt Free Buffer		
Purity:	> 95% by SDS-PAGE analysis		
Specific Activity:	Typically 40-70 units/mg. One unit is defined as the amount of enzyme that hydrolyzes one µmole of Suc-Ala-Ala-Pro-Phe-pNA per minute at 25°C, pH 8.0.		
Reconstitution:	Centrifuge vial briefly, prior to opening, to ensure recovery of the product. Reconstitute to the original volume using 2 mM HCl. Mix gently and allow a few minutes to dissolve completely. Do not vortex.		
Storage & Stability:	Store unopened vial at -20°C to -80°C for at least 1 year. Upon reconstitution, prepare aliquots and store at -80°C. Avoid repeated freeze-thaw cycles.		
Certification:	Prepared from tissue shown to be non reactive for HbsAG, anti-HCV, anti-HBc, and negative for anti-HIV 1 & 2 by FDA approved tests.		



- SDS-PAGE:**
12% BIO RAD Tris-HCl gel
1. Chymotrypsin - 5 µg (reduced / heated)
 2. Chymotrypsin - 10 µg (reduced / heated)
 3. Chymotrypsin - 20 µg (reduced / heated)
 4. LMW Standard (BIO-RAD Cat. No. 161-0304)
 5. Chymotrypsin - 5 µg (non-reduced / no heat)
 6. Chymotrypsin - 10 µg (non-reduced / no heat)
 7. Chymotrypsin - 20 µg (non-reduced / no heat)

NOT FOR HUMAN USE. FOR RESEARCH ONLY. NOT FOR DIAGNOSTIC OR THERAPEUTIC USE.