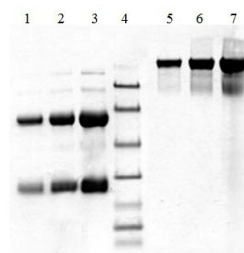


IGHA1

Native Human IgA1, Myeloma Plasma

Catalog No.	CSI19836A CSI19836B	Quantity:	5 mg 10 mg
Description:	In normal adult serum, the approximate percentage composition of IgA with respect to is subclasses is IgA1: 90% and IgA2: 10%. In secretory IgA, the subclass proportions may approach 50:50. The clinical significance of the subclasses has yet to be determined. The Native Human IgA1 is prepared from myeloma plasma.		
UniProt ID:	P01876		
Gene ID:	3493		
Source:	Human myeloma plasma		
Molecular Weight:	160 kDa		
Formulation:	0.01 M Sodium Phosphate, 0.15 M NaCl, 0.05% Sodium Azide, pH 7.4. Precaution: Sodium azide is a poisonous and hazardous substance which should be handled by trained staff only.		
Purity:	>95% by SDS-PAGE analysis		
Concentration:	≥ 1.0 mg/ml, lot specific		
Extinction Coefficient:	$E^{0.1\%}_{280\text{nm}} = 1.32$		
Storage & Stability:	Store at -80°C for up to 1 year. Upon initial thaw, prepare working aliquots and store at -80°C. Avoid repeated freeze-thaw cycles.		
Certification:	The source material has been shown to be non-reactive for HbsAG, anti-HCV, anti-HBc, and negative for anti-HIV 1 & 2 by FDA approved tests.		



1. Human IgA1 (5 ug) R
2. Human IgA1 (10 ug) R
3. Human IgA1 (20 ug) R
4. Molecular Weight Markers
5. Human IgA1 (5 ug) NR
6. Human IgA1 (10 ug) NR
7. Human IgA1 (20 ug) NR

NOT FOR HUMAN USE. FOR RESEARCH ONLY. NOT FOR DIAGNOSTIC OR THERAPEUTIC USE.



Cell Sciences®
65 Parker Street
Unit 11
Newburyport, MA 01950

Toll Free: 888-769-1246
Phone: 978-572-1070
Fax: 978-992-0298

E-mail: info@cellsciences.com
Website: www.cellsciences.com