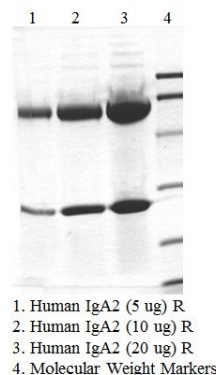


IGHA2

Native Human IgA2, Myeloma Plasma

Catalog No.	CSI19837A CSI19837B	Quantity:	5 mg 10 mg
Description:	In normal adult serum, the approximate percentage composition of IgA with respect to is subclasses is IgA1: 90% and IgA2:10%. In secretory IgA, the subclass proportions may approach 50:50. The clinical significance of the subclasses has yet to be determined.		
UniProt ID:	P01877		
Gene ID:	3494		
Source:	Human myeloma plasma		
Purity:	>95% by SDS-PAGE analysis. Single arc by IEP against antisera to whole human serum, human IgA2, and human kappa. Not immunoreactive to antisera against human IgA1, IgG, IgD, IgE, IgM, and lambda by IEP.		
Molecular Weight:	160 kDa		
Concentration:	≥ 1.0 mg/ml, lot specific		
Extinction Coefficient:	$E^{0.1\%}_{280\text{nm}} = 1.32$		
Formulation:	0.01 M Sodium Phosphate, 0.15 M NaCl, 0.05% Sodium Azide, pH 7.4. Precaution: Sodium azide is a poisonous and hazardous substance which should be handled by trained staff only.		
Purity:	>95% by SDS-PAGE analysis		
Storage & Stability:	Store at -80°C for up to 1 year. Upon initial thaw, prepare working aliquots and store at -80°C. Avoid repeated freeze-thaw cycles.		
Certification:	The source material has been shown to be non reactive for HbsAG, anti-HCV, anti-HBc, and negative for anti-HIV 1 & 2 by FDA approved tests.		



NOT FOR HUMAN USE. FOR RESEARCH ONLY. NOT FOR DIAGNOSTIC OR THERAPEUTIC USE.



Cell Sciences®
65 Parker Street
Unit 11
Newburyport, MA 01950

Toll Free: 888-769-1246
Phone: 978-572-1070
Fax: 978-992-0298

E-mail: info@cellsciences.com
Website: www.cellsciences.com