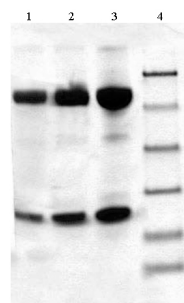


IGHM

Native Human IgM, Myeloma Plasma

Catalog No.	CSI19846A CSI19846B	Quantity:	5 mg 10 mg
Description:	IgM is found in normal plasma at a concentration of 1.2 to 4.0 mg/ml. It is the first immunoglobulin produced during the immune response, the first antibody in neonates, and is involved in pathogenesis of autoimmune diseases. A diminished level of IgM is associated with Wiskott-Aldrich syndrome.		
UniProt ID:	P01871		
Gene ID:	3507		
Source:	Human myeloma plasma		
Molecular Weight:	950 kDa		
Concentration:	≥ 1.0 mg/ml, lot specific		
Extinction Coefficient:	$E^{0.1\%}_{280\text{nm}} = 1.18$		
Formulation:	0.05M Tris-HCl, 0.2M NaCl, 0.05% Azide, pH 8.0		
Purity:	<p>>95% by SDS-PAGE analysis</p> <p>Single arc by IEP against antisera to whole human serum, human IgM, and human kappa.</p> <p>Not immunoreactive to antisera to human IgA, IgG, IgD, IgE, and lambda by IEP.</p>		
Application Notes:	The optimal concentration should be determined by the user for each specific application.		
Storage & Stability:	Store at -80°C for up to 1 year. Upon initial thaw, prepare working aliquots and store at -80°C. Avoid repeated freeze-thaw cycles.		
Certification:	Prepared from plasma shown to be non reactive for HbsAG, anti-HCV, anti-HBc, and negative for anti-HIV 1 & 2 by FDA approved tests		



4-12% Bis-Tris SDS-PAGE
 1 IgM, Human Myeloma Plasma (5 ug) Reduced
 2 IgM, Human Myeloma Plasma (10 ug) Reduced
 3 IgM, Human Myeloma Plasma (20 ug) Reduced
 4 Molecular Weight Markers

NOT FOR HUMAN USE. FOR RESEARCH ONLY. NOT FOR DIAGNOSTIC OR THERAPEUTIC USE.