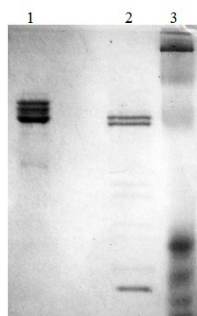


Plg Native Rat Plasmin

Catalog No.	CSI19921A CSI19921B	Quantity:	1.0 mg 10 mg
Description:	Prepared from plasminogen by activation with immobilized human uPA. Fully functionally active plasmin is purified from the activation reaction by immobilized SBTI. Plasmin will undergo rapid auto proteolysis in the absence of benzamidine and should be used quickly once thawed.		
UniProt ID:	Q01177		
Gene ID:	85253		
Source:	Rat Plasma		
Molecular Weight:	85 kDa		
Formulation:	0.1 M HEPES. 0.1 M NaCl , pH 7.4		
Concentration:	≥ 1.0 mg/ml, lot specific		
Extinction Coefficient:	$E_{280nm}^{0.1\%} = 1.69$		
Storage & Stability:	Store at -80°C for up to 1 year. Upon initial thaw, prepare working aliquots and store at -80°C. Avoid repeated freeze-thaw cycles.		



1. Rat Plasmin (3 ug) NR
2. Rat Plasmin (3 ug) R
3. Molecular Weight Markers

NOT FOR HUMAN USE. FOR RESEARCH ONLY. NOT FOR DIAGNOSTIC OR THERAPEUTIC USE.