

Gpr34

Mouse Probable G-protein coupled receptor 34

Catalog No.	CSM2045MP	Quantity:	10 mg
	CSM2045PR		50 µg

Alternate Names: G Protein-Coupled Receptor 34

Description: Gpr34 encodes the mouse probable G-protein coupled receptor 34, a member of the rhodopsin-like subfamily of GPCRs.

The receptor is available in the following formats: stable over-expression cell line, membrane preparation, or purified receptor in HEK293 or CHO. Various tagged versions are available.

Gene ID: 23890

UniProtKB: Q9R1K6

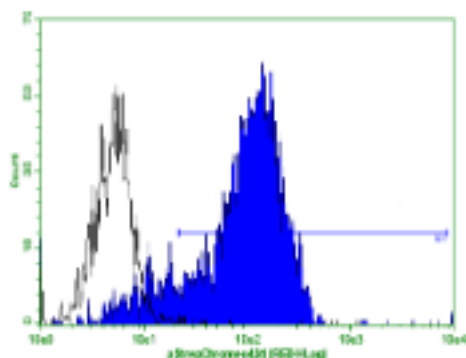
Format: Cell line, membrane preparation, or purified protein

Source: HEK 293 or CHO cells

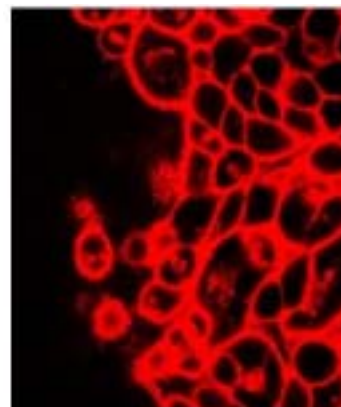
Characterization: Expression verified by flow cytometry. Receptor demonstrates biological activity when tested in a radioligand assay.

Affinity Tag Options: 4S-H: 2 x TwinStrep Tag at the amino-terminus, His₁₀ Tag at the carboxy-terminus
 FFH: 2 x FLAG Tag, His₁₀ Tag
 FRH: FLAG Tag, Rho Tag-His₁₀ Tag

Mouse Gpr34 receptor was stably overexpressed in HEK cells and expression was assessed by flow cytometry with Strep-Tactin Chromeo 488



Mouse Gpr34 receptor was stably overexpressed in HEK cells and expression was assessed by immunostaining with Strep-Tactin Chromeo 546



NOT FOR HUMAN USE. FOR RESEARCH ONLY. NOT FOR DIAGNOSTIC OR THERAPEUTIC USE.



Cell Sciences®
 65 Parker Street
 Unit 11
 Newburyport, MA 01950

Toll Free: 888-769-1246
 Phone: 978-572-1070
 Fax: 978-992-0298

E-mail: info@cellsciences.com
 Website: www.cellsciences.com