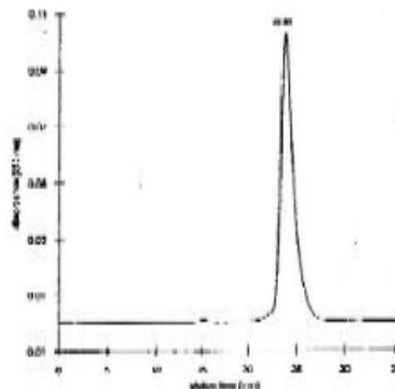


Gh1

Recombinant Rat Growth Hormone, Receptor Grade

Catalog No.	GHCU020 GHCU100 GHCM001	Quantity:	20 µg 100 µg 1.0 mg
Alternate Names:	GH, met-rGH, Somatotrophin		
Description:	Growth hormone (GH) is a single-chain polypeptide hormone which is synthesized, stored and secreted by the somatotroph cells of the anterior pituitary gland. It stimulates growth, cell division and regeneration and controls metabolism both directly and through the generation of IGF-I. For example, GH acts by interacting with specific receptors on the cell surface where it activates the MAPK/ERK pathway and directly stimulates division and multiplication of chondrocytes. GH also activates the JAK-STAT signalling pathway and the production of IGF-I. The liver is a major target organ and along with adipocytes, is the principal site of IGF-I production which mediates some of the effects of GH.		
UniProt ID:	P01244		
Molecular Weight:	21.94 kDa (191 aa)		
Source:	Expressed in <i>E. coli</i>		
Formulation:	10 mM sodium phosphate, pH 8.8, containing met-rGH:mannitol:glycine (1:5:1 w/w)		
Purity:	97%, monomer as determined by gel filtration chromatography		
Endotoxin Level:	< 0.1 EU/µg		
Reconstitution:	See Protocol for Handling of Growth Hormones (included).		
Storage & Stability:	Lyophilized protein is stable for 1 year at 2-8°C.		

Size Exclusion Chromatography
Superose 12 HR 10/30
50 mM borate, pH 9.1; 0.5 ml/min
100 µl rat GH (1 mg/ml)



NOT FOR HUMAN USE. FOR RESEARCH ONLY. NOT FOR DIAGNOSTIC OR THERAPEUTIC USE.



Cell Sciences®
65 Parker Street
Unit 11
Newburyport, MA 01950

Toll Free: 888-769-1246
Phone: 978-572-1070
Fax: 978-992-0298

E-mail: info@cellsciences.com
Website: www.cellsciences.com