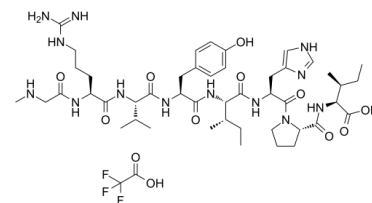


## Data Sheet

<b>Product Name:</b>	[Sar1, Ile8]-Angiotensin II (TFA)
<b>Cat. No.:</b>	CS-0046346
<b>Molecular Formula:</b>	C <sub>48</sub> H <sub>74</sub> F <sub>3</sub> N <sub>13</sub> O <sub>12</sub>
<b>Molecular Weight:</b>	1082.18
<b>Target:</b>	Others
<b>Pathway:</b>	Others
<b>Solubility:</b>	H <sub>2</sub> O : 50 mg/mL (46.20 mM; Need ultrasonic)



### BIOLOGICAL ACTIVITY:

[Sar1, Ile8]-Angiotensin II (TFA) is a peptide that has multiple effects on vascular smooth muscle, including contraction of normal arteries and hypertrophy or hyperplasia of cultured cells or diseased vessels. **In Vitro:** [Sar1, Ile8]-Angiotensin II (TFA) has multiple effects on vascular smooth muscle, including contraction of normal arteries and hypertrophy or hyperplasia of cultured cells or diseased vessels. [Sar1, Ile8]-Angiotensin II (TFA) activates both the NADPH and NADH oxidases, and stimulates superoxide anion formation in vascular smooth muscle cells<sup>[1]</sup>.

### References:

[1]. Griendling KK, et al. Angiotensin II stimulates NADH and NADPH oxidase activity in cultured vascular smooth muscle cells. Circ Res. 1994 Jun;74(6):1141-8.

### CAIndexNames:

[Sar1, Ile8]-Angiotensin II (TFA)

### SMILES:

CC[C@H](C)[C@@H](C(=O)=O)NC([C@H]1N(C([C@H](CC2=CNC=N2)NC([C@H]([C@@H](C)CC)NC([C@H](CC3=CC=C(O)C=C3)NC([C@H](C(C)C)NC([C@H](C)CCNC(N)=N)NC(CNC)=O)=O)=O)=O)=O)CCC1=O)OC(C(F)(F)F)=O

**Caution: Product has not been fully validated for medical applications. For research use only.**

Tel: 732-484-9848 Fax: 888-484-5008 E-mail: sales@ChemScene.com

Address: 1 Deer Park Dr, Suite Q, Monmouth Junction, NJ 08852, USA