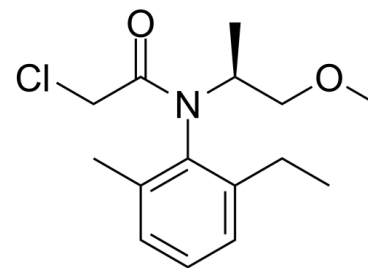


## Data Sheet

Product Name:	(S)-Metolachor
Cat. No.:	CS-0064875
CAS No.:	87392-12-9
Molecular Formula:	C <sub>15</sub> H <sub>22</sub> ClNO <sub>2</sub>
Molecular Weight:	283.79
Target:	Others
Pathway:	Others
Solubility:	10 mM in DMSO



### BIOLOGICAL ACTIVITY:

(S)-Metolachor, a derivative of aniline, is a major pesticide in use.

### References:

[1]. Fauvelle V, et al. Simulated conservative tracer as a proxy for S-metolachlor concentration predictions compared to POCIS measurements in Arcachon Bay. Mar Pollut Bull. 2018 Aug;133:423-427.

### CAIndexNames:

Acetamide, 2-chloro-N-(2-ethyl-6-methylphenyl)-N-[(1S)-2-methoxy-1-methylethyl]-

### SMILES:

O=C(N(C1=C(C)C=CC=C1CC)[C@@H](C)COC)CCl

**Caution: Product has not been fully validated for medical applications. For research use only.**

Tel: 732-484-9848 Fax: 888-484-5008 E-mail: sales@ChemScene.com

Address: 1 Deer Park Dr, Suite Q, Monmouth Junction, NJ 08852, USA