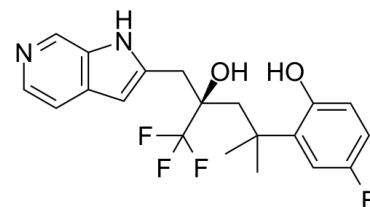


Data Sheet

Product Name:	Glucocorticoid receptor agonist
Cat. No.:	CS-0520
CAS No.:	1245526-82-2
Molecular Formula:	C ₂₀ H ₂₀ F ₄ N ₂ O ₂
Molecular Weight:	396.38
Target:	Glucocorticoid Receptor
Pathway:	GPCR/G Protein
Solubility:	DMSO : ≥ 100 mg/mL (252.28 mM)



BIOLOGICAL ACTIVITY:

Glucocorticoid receptor agonist is a potent Glucocorticoid receptor agonist. IC₅₀ value: Target:

PROTOCOL (Extracted from published papers and Only for reference)

Animal Administration: Animal administration [1] Female Balb/c mice weighing approximately 20 g were used. Mice were administered the test compound and in Cremophor (po) approximately 60 min prior to LPS/D-gal administration. The volume of oral gavage was 0.15 mL. Then mice were administered LPS (E. coli LPS 055:85, 1.0 µg/mouse) plus D-gal (50 mg/kg) intravenously in 0.2 mL of pyrogen-free saline. One hour after LPS/D-gal, each mouse was anesthetized, bled by cardiac puncture, and collected for serum TNF-R and compound levels. Blood samples were centrifuged at 2500 rpm for 10-15 min, the serum was decanted, and samples were stored frozen at -70°C until transfer either for TNF-R determination or to Drug Metabolism and Pharmacokinetics for plasma concentration analysis by HPLC. The concentration of TNF-R in the serum was measured by a commercially available ELISA kit. ELISA was performed. All samples are assayed in duplicate.

References:

[1]. Riether, Doris et al. Nonsteroidal dissociated glucocorticoid agonists containing azaindoles as steroid A-ring mimetics. Journal of Medicinal Chemistry (2010), 53(18), 6681-6698.

CAIndexNames:

1H-Pyrrolo[2,3-c]pyridine-2-ethanol, α-[2-(5-fluoro-2-hydroxyphenyl)-2-methylpropyl]-α-(trifluoromethyl)-, (αR)-

SMILES:

OC1=CC=C(C=C1C(C)(C)[C@](O)(C(F)(F)F)CC2=CC3=C(C=NC=C3)N2)C(F)

Caution: Product has not been fully validated for medical applications. For research use only.

Tel: 732-484-9848

Fax: 888-484-5008

E-mail: sales@ChemScene.com

Address: 1 Deer Park Dr, Suite Q, Monmouth Junction, NJ 08852, USA