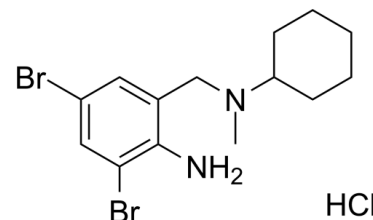


Data Sheet

Product Name:	Bromhexine (hydrochloride)
Cat. No.:	CS-2430
CAS No.:	611-75-6
Molecular Formula:	C ₁₄ H ₂₁ Br ₂ ClN ₂
Molecular Weight:	412.59
Target:	Autophagy; Reactive Oxygen Species
Pathway:	Autophagy; Immunology/Inflammation; Metabolic Enzyme/Protease; NF-κB
Solubility:	DMSO : 20 mg/mL (48.47 mM; Need ultrasonic); H ₂ O : 3.33 mg/mL (8.07 mM; Need ultrasonic)



BIOLOGICAL ACTIVITY:

Bromhexine Hydrochloride is a medication prescribed for coughs which works by dissolving hard phlegm. Target: Others Bromhexine is a mucolytic agent used in the treatment of respiratory disorders associated with viscid or excessive mucus. In addition, bromhexine has antioxidant properties. Bromhexine is intended to support the body's mechanisms for clearing mucus from the respiratory tract. Bromhexine is a synthetic derivative of the herbal active ingredient vasicine. It has been shown to increase the proportion of serous bronchial secretion, making it more easily expectorated. It is indicated as "secretolytic therapy in bronchopulmonary diseases associated with abnormal mucus secretion and impaired mucus transport". From Wikipedia. [1]

References:

[1]. <http://en.wikipedia.org/wiki/Bromhexine>

CAIndexNames:

Benzenemethanamine, 2-amino-3,5-dibromo-N-cyclohexyl-N-methyl-, hydrochloride (1:1)

SMILES:

CN(C1CCCCC1)CC2=CC(Br)=CC(Br)=C2N.Cl

Caution: Product has not been fully validated for medical applications. For research use only.

Tel: 732-484-9848 Fax: 888-484-5008 E-mail: sales@ChemScene.com

Address: 1 Deer Park Dr, Suite Q, Monmouth Junction, NJ 08852, USA