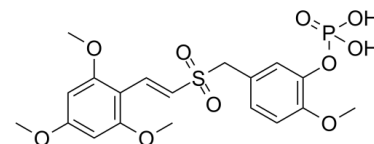


## Data Sheet

<b>Product Name:</b>	Briciclib
<b>Cat. No.:</b>	CS-5589
<b>CAS No.:</b>	865783-99-9
<b>Molecular Formula:</b>	C <sub>19</sub> H <sub>23</sub> O <sub>10</sub> PS
<b>Molecular Weight:</b>	474.42
<b>Target:</b>	Autophagy; Eukaryotic Initiation Factor (eIF)
<b>Pathway:</b>	Autophagy; Cell Cycle/DNA Damage
<b>Solubility:</b>	DMSO : ≥ 31 mg/mL (65.34 mM)



### BIOLOGICAL ACTIVITY:

Briciclib is a water soluble derivative of ON 013100, and has the potential in targeting **eIF4E** for solid cancers. IC<sub>50</sub> & Target: eIF4E<sup>[1]</sup>  
**In Vitro:** Briciclib has the potential in targeting eIF4E. Briciclib shows inhibitory activity against the proliferation of mantle cell leukemia (EKO-1 and MINO), breast (MCF7 and MDA-MB-231), gastric (AGS), and esophageal (OE19, OE33, and FLO-1) cancer cell lines with GI<sub>50</sub>s of 9.8-12.2 nM, and with no toxicity on normal endothelial cells. Briciclib dose-dependently reduces the expression of cyclin D1 and c-Myc in breast and MCL cancer cell lines within 8 hours<sup>[1]</sup>.

### References:

[1]. Neel Jasani, et al. Abstract 1649: Potent anticancer activity of an orally bioavailable small molecule, ON 013100, and its water soluble derivative, briciclib, a clinical-stage eIF4E-targeted agent. Cancer Research. August 2015, Volume 75, Issue 15.

### CAIndexNames:

Phenol, 2-methoxy-5-[[[(1E)-2-(2,4,6-trimethoxyphenyl)ethenyl]sulfonyl]methyl]-, 1-(dihydrogen phosphate)

### SMILES:

O=S(CC1=CC(OP(O)(O)=O)=C(OC)C=C1)/C=C/C2=C(OC)C=C(OC)C=C2OC)=O

**Caution: Product has not been fully validated for medical applications. For research use only.**

Tel: 732-484-9848 Fax: 888-484-5008 E-mail: sales@ChemScene.com

Address: 1 Deer Park Dr, Suite Q, Monmouth Junction, NJ 08852, USA