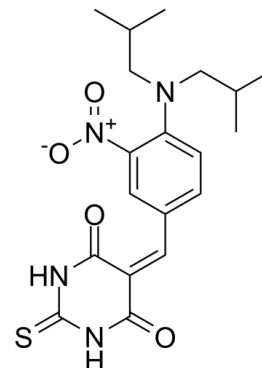


Data Sheet

Product Name:	M2I-1
Cat. No.:	CS-5670
CAS No.:	312271-03-7
Molecular Formula:	C ₁₉ H ₂₄ N ₄ O ₄ S
Molecular Weight:	404.48
Target:	Others
Pathway:	Others
Solubility:	DMSO : ≥ 32 mg/mL



BIOLOGICAL ACTIVITY:

M2I-1 is a **Mad2** inhibitor targeting the binding of Mad2 to Cdc20, an essential protein-protein interaction (PPI) within the spindle assembly checkpoint (SAC)^[1]. IC₅₀ & Target: Mad2^[1] **In Vitro:** M2I-1 may not be sufficiently potent to fully inhibit SAC function in cells^[1].

M2I-1 weakens the SAC response, indicating that the compound might be active in cells.^[1]

References:

[1]. Johanna Kastl et al. Mad2 Inhibitor-1 (M2I-1): A Small Molecule Protein-Protein Interaction Inhibitor Targeting the Mitotic Spindle Assembly Checkpoint. ACS Chem. Biol., 2015, 10 (7), pp 1661-1666.

CAIndexNames:

4,6(1H,5H)-Pyrimidinedione, 5-[[4-[bis(2-methylpropyl)amino]-3-nitrophenyl]methylene]dihydro-2-thioxo-

SMILES:

O=C1C(C(N1)=O)=C\C2=CC=C(N(CC(C)C)CC(C)C)C([N+])([O-])=O)=C2)NC1=S

Caution: Product has not been fully validated for medical applications. For research use only.

Tel: 732-484-9848 Fax: 888-484-5008 E-mail: sales@ChemScene.com

Address: 1 Deer Park Dr, Suite Q, Monmouth Junction, NJ 08852, USA