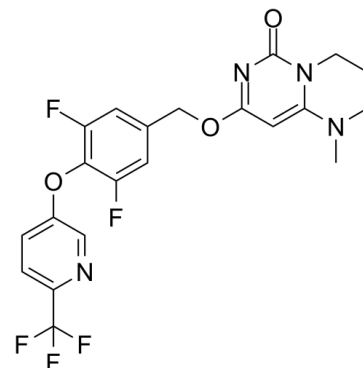


## Data Sheet

<b>Product Name:</b>	Lp-PLA2 -IN-1
<b>Cat. No.:</b>	CS-5918
<b>CAS No.:</b>	1420367-28-7
<b>Molecular Formula:</b>	C <sub>21</sub> H <sub>17</sub> F <sub>5</sub> N <sub>4</sub> O <sub>3</sub>
<b>Molecular Weight:</b>	468.38
<b>Target:</b>	Phospholipase
<b>Pathway:</b>	Metabolic Enzyme/Protease
<b>Solubility:</b>	Ethanol : 25 mg/mL (53.38 mM; Need ultrasonic)



### BIOLOGICAL ACTIVITY:

Lp-PLA2 -IN-1 inhibit Lp-PLA2 activity, processes for their preparation, to compositions containing them and to their use in the treatment of diseases associated with the activity of Lp-PLA2, for example atherosclerosis, Alzheimer's disease.

### References:

[1]. PCT Int. Appl. (2013), WO 2013014185 A1 20130131.

### CAIndexNames:

6H-Pyrimido[1,6-a]pyrimidin-6-one, 8-[[[3,5-difluoro-4-[[6-(trifluoromethyl)-3-pyridinyl]oxy]phenyl]methoxy]-1,2,3,4-tetrahydro-1-methyl-

### SMILES:

CN1C(N2CCC1)=CC(OCC3=CC(F)=C(OC4=CC=C(C(F)(F)F)N=C4)C(F)=C3)=NC2=O

**Caution: Product has not been fully validated for medical applications. For research use only.**

Tel: 732-484-9848 Fax: 888-484-5008 E-mail: sales@ChemScene.com

Address: 1 Deer Park Dr, Suite Q, Monmouth Junction, NJ 08852, USA