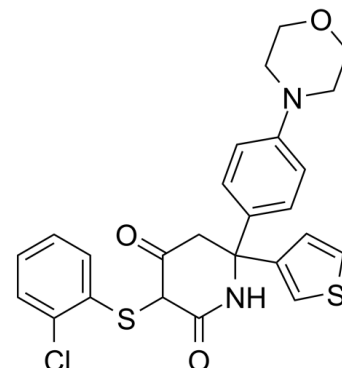


Data Sheet

Product Name:	GNE-140 (racemate)
Cat. No.:	CS-5958
CAS No.:	1802977-61-2
Molecular Formula:	C ₂₅ H ₂₃ CIN ₂ O ₃ S ₂
Molecular Weight:	499.04
Target:	Lactate Dehydrogenase
Pathway:	Metabolic Enzyme/Protease
Solubility:	DMSO : ≥ 34 mg/mL (68.13 mM)



BIOLOGICAL ACTIVITY:

GNE-140 racemate is a LDHA inhibitor. In vitro: Acquired resistance to GNE-140 is driven by activation of the AMPK-mTOR-S6K signaling pathway, which lead to increased OXPHOS, and inhibitors targeting this pathway could prevent resistance.

CAIndexNames:

2,4-Piperidinedione, 3-[[2-chlorophenyl]thio]-6-[4-(4-morpholinyl)phenyl]-6-(3-thienyl)-

SMILES:

O=C(C1SC2=CC=CC=C2Cl)NC(C3=CSC=C3)(C4=CC=C(N5CCOCC5)C=C4)CC1=O

Caution: Product has not been fully validated for medical applications. For research use only.

Tel: 732-484-9848 Fax: 888-484-5008 E-mail: sales@ChemScene.com

Address: 1 Deer Park Dr, Suite Q, Monmouth Junction, NJ 08852, USA