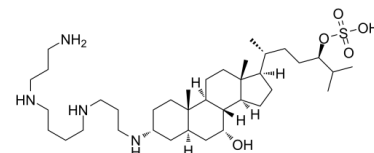


Data Sheet

Product Name:	MSI-1701
Cat. No.:	CS-7932
CAS No.:	390808-64-7
Molecular Formula:	C37H72N4O5S
Molecular Weight:	685.06
Target:	Others
Pathway:	Others
Solubility:	10 mM in DMSO



BIOLOGICAL ACTIVITY:

MSI-1701 is an analogue of MSI-1436 which can control weight gain and blood glucose level extracted from patent US 7410959 B1. **In Vivo:** Analogues that differ from MSI-1436 at only a single stereocenter, such as MSI-1701 (the polyamine at C-3) or MSI-1777 (the methyl at C-20) exhibit significantly reduced activity, while MSI-1673 (the OH at C-7) is completely inactive^[1].

PROTOCOL (Extracted from published papers and Only for reference)

Animal Administration: ^[1]Experiments are performed using age-matched (4 to 5 weeks old) male mice provided food and water ad lib. Mice corresponding to a single experimental cohort are housed together in a single cage. Animals are used 1 week after arrival. Drug dosing is conducted with 10 mg/kg of each compound (including MSI-1701) via the i.p. route every 3 days for 4 doses, beginning on day 0^[1].

References:

[1]. Michael Zasloff, et al. Therapeutic uses for aminosterol compounds. US 7410959 B1.

CAIndexNames:

Cholestane-7,24-diol, 3-[[[3-[[[4-[(3-aminopropyl)amino]butyl]amino]propyl]amino]-, 24-(hydrogen sulfate), (3 α ,5 α ,7 α ,24R)-

SMILES:

NCCCNCCCCNCCN[C@H]1C[C@@](C[C@@H](O)[C@]2([H])[C@]3([H])CC[C@@]4(C)[C@@]2([H])CC[C@@]4([C@H](C)CC[C@@H](OS(=O)(O)=O)C(C)C)[H])([H])[C@]3(C)CC1

Caution: Product has not been fully validated for medical applications. For research use only.

Tel: 732-484-9848 Fax: 888-484-5008 E-mail: sales@ChemScene.com

Address: 1 Deer Park Dr, Suite Q, Monmouth Junction, NJ 08852, USA