

# Product Data Sheet

## Anti-NCX1 Antibody

| Catalog #                | Source  | Reactivity        | Applications |
|--------------------------|---|-------------------|--------------|
| CPA2077                  | Rabbit  | H, M, R, B, D, Rb | WB           |
| <b>Description</b>       | Rabbit polyclonal antibody to NCX1  |                   |              |
| <b>Immunogen</b>         | KLH-conjugated synthetic peptide encompassing a sequence within the center region of human NCX1. The exact sequence is proprietary. |                   |              |
| <b>Purification</b>      | The antibody was purified by immunogen affinity chromatography.   |                   |              |
| <b>Specificity</b>       | Recognizes endogenous levels of NCX1 protein.   |                   |              |
| <b>Clonality</b>         | Polyclonal  |                   |              |
| <b>Form</b>              | Liquid in 0.42% Potassium phosphate, 0.87% Sodium chloride, pH 7.3, 30% glycerol, and 0.01% sodium azide.                           |                   |              |
| <b>Dilution</b>          | WB (1/500 - 1/1000)   |                   |              |
| <b>Gene Symbol</b>       | SLC8A1  |                   |              |
| <b>Alternative Names</b> | CNC; NCX1; Sodium/calcium exchanger 1; Na(+)/Ca(2+)-exchange protein 1; Solute carrier family 8 member 1                            |                   |              |
| <b>Entrez Gene</b>       | 6546 (Human); 20541 (Mouse); 29715 (Rat)  |                   |              |
| <b>SwissProt</b>         | P32418 (Human); P70414 (Mouse); Q01728 (Rat)  |                   |              |
| <b>Storage/Stability</b> | Shipped at 4°C. Upon delivery aliquot and store at -20°C for one year. Avoid freeze/thaw cycles.                                    |                   |              |

**Application key:** E- ELISA, WB- Western blot, IH- Immunohistochemistry, IF- Immunofluorescence, FC- Flow cytometry, IC- Immunocytochemistry, IP- Immunoprecipitation, ChIP- Chromatin Immunoprecipitation, EMSA- Electrophoretic Mobility Shift Assay, BL- Blocking, SE- Sandwich ELISA, CBE- Cell-based ELISA, RNAi- RNA interference

**Species reactivity key:** H- Human, M- Mouse, R- Rat, B- Bovine, C- Chicken, D- Dog, G- Goat, Mk- Monkey, P- Pig, Rb- Rabbit, S- Sheep, Z- Zebrafish

### COHESION BIOSCIENCES LIMITED

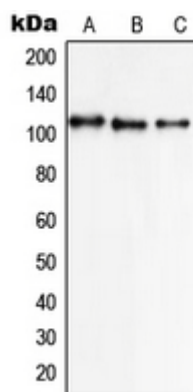
**WEB**  
www.cohesionbio.com

**ORDER**  
order@cohesionbio.com

**SUPPORT**  
techsupport@cohesionbio.com

**CUSTOM**  
custom@cohesionbio.com

## Product Data Sheet



Western blot analysis of NCX1 expression in K562 (A), A549 (B), HL60 (C) whole cell lysates.

**Application key:** E- ELISA, WB- Western blot, IH- Immunohistochemistry, IF- Immunofluorescence, FC- Flow cytometry, IC- Immunocytochemistry, IP- Immunoprecipitation, ChIP- Chromatin Immunoprecipitation, EMSA- Electrophoretic Mobility Shift Assay, BL- Blocking, SE- Sandwich ELISA, CBE- Cell-based ELISA, RNAi- RNA interference

**Species reactivity key:** H- Human, M- Mouse, R- Rat, B- Bovine, C- Chicken, D- Dog, G- Goat, Mk- Monkey, P- Pig, Rb- Rabbit, S- Sheep, Z- Zebrafish

**COHESION BIOSCIENCES LIMITED**

**WEB**  
[www.cohesionbio.com](http://www.cohesionbio.com)

**ORDER**  
[order@cohesionbio.com](mailto:order@cohesionbio.com)

**SUPPORT**  
[techsupport@cohesionbio.com](mailto:techsupport@cohesionbio.com)

**CUSTOM**  
[custom@cohesionbio.com](mailto:custom@cohesionbio.com)