

# Product Data Sheet

## Anti-Histone Deacetylase 9 Antibody

Catalog #	Source	Reactivity	Applications
CPA2419	Rabbit	H, M, R	WB, IH, IF/IC
<b>Description</b>	Rabbit polyclonal antibody to Histone Deacetylase 9		
<b>Immunogen</b>	KLH-conjugated synthetic peptide encompassing a sequence within the C-term region of human Histone Deacetylase 9. The exact sequence is proprietary.		
<b>Purification</b>	The antibody was purified by immunogen affinity chromatography.		
<b>Specificity</b>	Recognizes endogenous levels of Histone Deacetylase 9 protein.		
<b>Clonality</b>	Polyclonal		
<b>Form</b>	Liquid in 0.42% Potassium phosphate, 0.87% Sodium chloride, pH 7.3, 30% glycerol, and 0.01% sodium azide.		
<b>Dilution</b>	WB (1/500 - 1/1000), IH (1/100 - 1/200), IF/IC (1/100 - 1/500)		
<b>Gene Symbol</b>	HDAC9		
<b>Alternative Names</b>	Histone deacetylase 9; HD9; Histone deacetylase 7B; HD7; HD7b; Histone deacetylase-related protein; MEF2-interacting transcription repressor MITR; HDAC9; HDAC7; HDAC7B; HDRP; KIAA0744; MITR		
<b>Entrez Gene</b>	9734 (Human)		
<b>SwissProt</b>	Q9UKV0 (Human)		
<b>Storage/Stability</b>	Shipped at 4°C. Upon delivery aliquot and store at -20°C for one year. Avoid freeze/thaw cycles.		

**Application key:** E- ELISA, WB- Western blot, IH- Immunohistochemistry, IF- Immunofluorescence, FC- Flow cytometry, IC- Immunocytochemistry, IP- Immunoprecipitation, ChIP- Chromatin Immunoprecipitation, EMSA- Electrophoretic Mobility Shift Assay, BL- Blocking, SE- Sandwich ELISA, CBE- Cell-based ELISA, RNAi- RNA interference

**Species reactivity key:** H- Human, M- Mouse, R- Rat, B- Bovine, C- Chicken, D- Dog, G- Goat, Mk- Monkey, P- Pig, Rb- Rabbit, S- Sheep, Z- Zebrafish

### COHESION BIOSCIENCES LIMITED

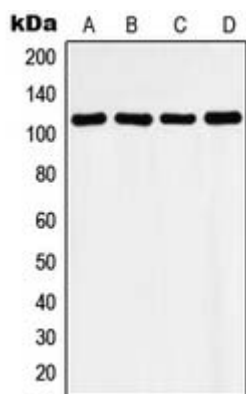
**WEB**  
www.cohesionbio.com

**ORDER**  
order@cohesionbio.com

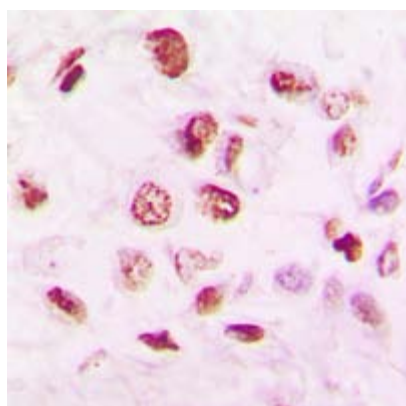
**SUPPORT**  
techsupport@cohesionbio.com

**CUSTOM**  
custom@cohesionbio.com

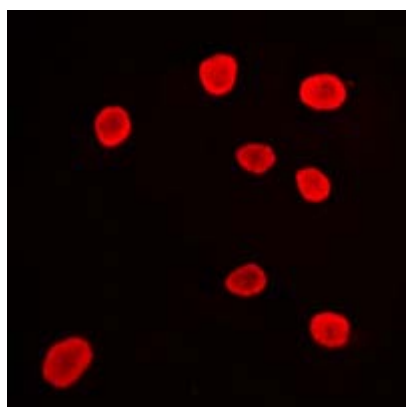
## Product Data Sheet



Western blot analysis of Histone Deacetylase 9 expression in LO2 (A), mouse heart (B), rat heart (C), Ramos (D) whole cell lysates.



Immunohistochemical analysis of Histone Deacetylase 9 staining in human lung cancer formalin fixed paraffin embedded tissue section. The section was pre-treated using heat mediated antigen retrieval with sodium citrate buffer (pH 6.0). The section was then incubated with the antibody at room temperature and detected using an HRP conjugated compact polymer system. DAB was used as the chromogen. The section was then counterstained with haematoxylin and mounted with DPX.



Immunofluorescent analysis of Histone Deacetylase 9 staining in Ramos cells. Formalin-fixed cells were permeabilized with 0.1% Triton X-100 in TBS for 5-10 minutes and blocked with 3% BSA-PBS for 30 minutes at room temperature. Cells were probed with the primary antibody in 3% BSA-PBS and incubated overnight at 4 °C in a humidified chamber. Cells were washed with PBST and incubated with a DyLight 594-conjugated secondary antibody (red) in PBS at room temperature in the dark.

**Application key:** E- ELISA, WB- Western blot, IH- Immunohistochemistry, IF- Immunofluorescence, FC- Flow cytometry, IC- Immunocytochemistry, IP- Immunoprecipitation, ChIP- Chromatin Immunoprecipitation, EMSA- Electrophoretic Mobility Shift Assay, BL- Blocking, SE- Sandwich ELISA, CBE- Cell-based ELISA, RNAi- RNA interference

**Species reactivity key:** H- Human, M- Mouse, R- Rat, B- Bovine, C- Chicken, D- Dog, G- Goat, Mk- Monkey, P- Pig, Rb- Rabbit, S- Sheep, Z- Zebrafish

**COHESION BIOSCIENCES LIMITED**

**WEB**  
[www.cohesionbio.com](http://www.cohesionbio.com)

**ORDER**  
[order@cohesionbio.com](mailto:order@cohesionbio.com)

**SUPPORT**  
[techsupport@cohesionbio.com](mailto:techsupport@cohesionbio.com)

**CUSTOM**  
[custom@cohesionbio.com](mailto:custom@cohesionbio.com)