

# Product Data Sheet

## Anti-PKC alpha (pY657) Antibody

| Catalog #                | Source   | Reactivity     | Applications |
|--------------------------|--|----------------|--------------|
| CPA4783                  | Rabbit   | H, M, R, B, Rb | WB           |
| <b>Description</b>       | Rabbit polyclonal antibody to PKC alpha (pY657)  |                |              |
| <b>Immunogen</b>         | KLH-conjugated synthetic peptide encompassing a sequence within the C-term region of human PKC alpha. The exact sequence is proprietary. |                |              |
| <b>Purification</b>      | The antibody was purified by immunogen affinity chromatography.  |                |              |
| <b>Specificity</b>       | Recognizes endogenous levels of PKC alpha (pY657) protein.   |                |              |
| <b>Clonality</b>         | Polyclonal   |                |              |
| <b>Form</b>              | Liquid in 0.42% Potassium phosphate, 0.87% Sodium chloride, pH 7.3, 30% glycerol, and 0.01% sodium azide.                                |                |              |
| <b>Dilution</b>          | WB (1/500 - 1/1000)  |                |              |
| <b>Gene Symbol</b>       | PRKCA  |                |              |
| <b>Alternative Names</b> | PKCA; PRKACA; Protein kinase C alpha type; PKC-A; PKC-alpha  |                |              |
| <b>Entrez Gene</b>       | 5578 (Human); 18750 (Mouse)  |                |              |
| <b>SwissProt</b>         | P17252 (Human); P20444 (Mouse); P05696 (Rat)   |                |              |
| <b>Storage/Stability</b> | Shipped at 4°C. Upon delivery aliquot and store at -20°C for one year. Avoid freeze/thaw cycles.   |                |              |

**Application key:** E- ELISA, WB- Western blot, IH- Immunohistochemistry, IF- Immunofluorescence, FC- Flow cytometry, IC- Immunocytochemistry, IP- Immunoprecipitation, ChIP- Chromatin Immunoprecipitation, EMSA- Electrophoretic Mobility Shift Assay, BL- Blocking, SE- Sandwich ELISA, CBE- Cell-based ELISA, RNAi- RNA interference

**Species reactivity key:** H- Human, M- Mouse, R- Rat, B- Bovine, C- Chicken, D- Dog, G- Goat, Mk- Monkey, P- Pig, Rb- Rabbit, S- Sheep, Z- Zebrafish

### COHESION BIOSCIENCES LIMITED

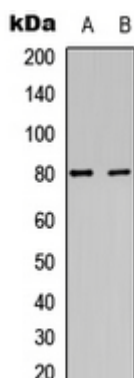
**WEB**  
[www.cohesionbio.com](http://www.cohesionbio.com)

**ORDER**  
[order@cohesionbio.com](mailto:order@cohesionbio.com)

**SUPPORT**  
[techsupport@cohesionbio.com](mailto:techsupport@cohesionbio.com)

**CUSTOM**  
[custom@cohesionbio.com](mailto:custom@cohesionbio.com)

## Product Data Sheet



Western blot analysis of PKC alpha (pY657) expression in HEK293T (A), HepG2 (B) whole cell lysates.

**Application key:** E- ELISA, WB- Western blot, IH- Immunohistochemistry, IF- Immunofluorescence, FC- Flow cytometry, IC- Immunocytochemistry, IP- Immunoprecipitation, ChIP- Chromatin Immunoprecipitation, EMSA- Electrophoretic Mobility Shift Assay, BL- Blocking, SE- Sandwich ELISA, CBE- Cell-based ELISA, RNAi- RNA interference

**Species reactivity key:** H- Human, M- Mouse, R- Rat, B- Bovine, C- Chicken, D- Dog, G- Goat, Mk- Monkey, P- Pig, Rb- Rabbit, S- Sheep, Z- Zebrafish

**COHESION BIOSCIENCES LIMITED**

**WEB**  
[www.cohesionbio.com](http://www.cohesionbio.com)

**ORDER**  
[order@cohesionbio.com](mailto:order@cohesionbio.com)

**SUPPORT**  
[techsupport@cohesionbio.com](mailto:techsupport@cohesionbio.com)

**CUSTOM**  
[custom@cohesionbio.com](mailto:custom@cohesionbio.com)