

Product Data Sheet

Anti-SUR2 Antibody

| Catalog # | Source | Reactivity | Applications |
|--------------------------|---|-------------|---------------|
| CPA5160 | Rabbit | H, M, R, Mk | WB, IH, IF/IC |
| Description | Rabbit polyclonal antibody to SUR2 | | |
| Immunogen | KLH-conjugated synthetic peptide encompassing a sequence within the N-term region of human SUR2. The exact sequence is proprietary. | | |
| Purification | The antibody was purified by affinity chromatography. | | |
| Specificity | Recognizes endogenous levels of SUR2 protein. | | |
| Clonality | Polyclonal | | |
| Form | Liquid in 0.42% Potassium phosphate, 0.87% Sodium chloride, pH 7.3, 30% glycerol, and 0.01% sodium azide. | | |
| Dilution | WB (1/500 - 1/1000), IH (1/100 - 1/200), IF/IC (1/100 - 1/500) | | |
| Gene Symbol | MED23 | | |
| Alternative Names | ARC130; CRSP3; DRIP130; KIAA1216; SUR2; Mediator of RNA polymerase II transcription subunit 23; Activator-recruited cofactor 130 kDa component; ARC130; Cofactor required for Sp1 transcriptional activation subunit 3; CRSP complex subunit 3; Mediator complex subunit 23; Protein sur-2 homolog; hSur-2; Transcriptional coactivator CRSP130; Vitamin D3 receptor-interacting protein complex 130 kDa component; DRIP130 | | |
| Entrez Gene | 9439 (Human);70208 (Mouse) | | |
| SwissProt | Q9ULK4 (Human);Q80YQ2 (Mouse);Q5EB59 (Rat) | | |
| Storage/Stability | Shipped at 4°C. Upon delivery aliquot and store at -20°C for one year. Avoid freeze/thaw cycles. | | |

Application key: E- ELISA, WB- Western blot, IH- Immunohistochemistry, IF- Immunofluorescence, FC- Flow cytometry, IC- Immunocytochemistry, IP- Immunoprecipitation, ChIP- Chromatin Immunoprecipitation, EMSA- Electrophoretic Mobility Shift Assay, BL- Blocking, SE- Sandwich ELISA, CBE- Cell-based ELISA, RNAi- RNA interference

Species reactivity key: H- Human, M- Mouse, R- Rat, B- Bovine, C- Chicken, D- Dog, G- Goat, Mk- Monkey, P- Pig, Rb- Rabbit, S- Sheep, Z- Zebrafish

COHESION BIOSCIENCES LIMITED

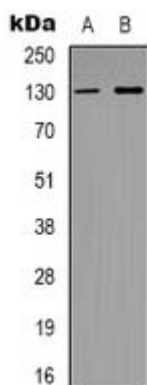
WEB
www.cohesionbio.com

ORDER
order@cohesionbio.com

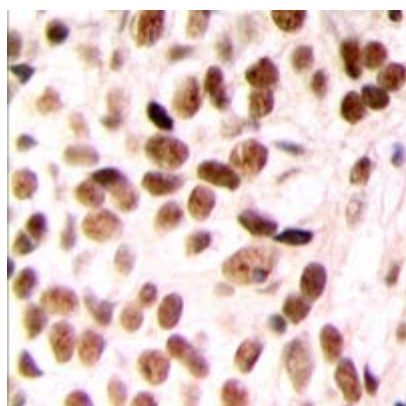
SUPPORT
techsupport@cohesionbio.com

CUSTOM
custom@cohesionbio.com

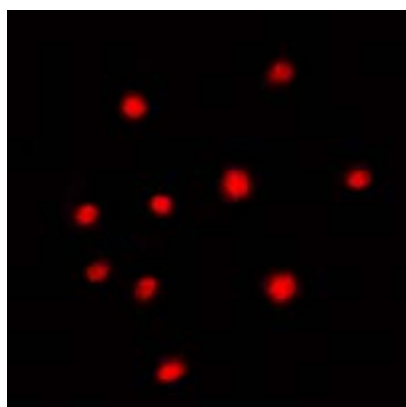
Product Data Sheet



Western blot analysis of SUR2 expression in Hela (A), MCF7 (B) whole cell lysates.



Immunohistochemical analysis of SUR2 staining in human breast cancer formalin fixed paraffin embedded tissue section. The section was pre-treated using heat mediated antigen retrieval with sodium citrate buffer (pH 6.0). The section was then incubated with the antibody at room temperature and detected using an HRP conjugate compact polymer system. DAB was used as the chromogen. The section was then counterstained with haematoxylin and mounted with DPX.



Immunofluorescent analysis of SUR2 staining in Hela cells. Formalin-fixed cells were permeabilized with 0.1% Triton X-100 in TBS for 5-10 minutes and blocked with 3% BSA-PBS for 30 minutes at room temperature. Cells were probed with the primary antibody in 3% BSA-PBS and incubated overnight at 4 °C in a humidified chamber. Cells were washed with PBST and incubated with a DyLight 594-conjugated secondary antibody (red) in PBS at room temperature in the dark.

Application key: E- ELISA, WB- Western blot, IH- Immunohistochemistry, IF- Immunofluorescence, FC- Flow cytometry, IC- Immunocytochemistry, IP- Immunoprecipitation, ChIP- Chromatin Immunoprecipitation, EMSA- Electrophoretic Mobility Shift Assay, BL- Blocking, SE- Sandwich ELISA, CBE- Cell-based ELISA, RNAi- RNA interference

Species reactivity key: H- Human, M- Mouse, R- Rat, B- Bovine, C- Chicken, D- Dog, G- Goat, Mk- Monkey, P- Pig, Rb- Rabbit, S- Sheep, Z- Zebrafish

COHESION BIOSCIENCES LIMITED

WEB
www.cohesionbio.com

ORDER
order@cohesionbio.com

SUPPORT
techsupport@cohesionbio.com

CUSTOM
custom@cohesionbio.com