

# Product Data Sheet

## Anti-Cyclin D3 (pT283) Antibody

| Catalog #                | Source   | Reactivity | Applications |
|--------------------------|--|------------|--------------|
| CPA7006                  | Rabbit   | H, M, R, B | WB, IH       |
| <b>Description</b>       | Rabbit polyclonal antibody to Cyclin D3 (pT283)  |            |              |
| <b>Immunogen</b>         | KLH-conjugated synthetic peptide encompassing a sequence within the C-term region of human Cyclin D3 (pT283). The exact sequence is proprietary. |            |              |
| <b>Purification</b>      | The antibody was purified by immunogen affinity chromatography.  |            |              |
| <b>Specificity</b>       | Recognizes endogenous levels of Cyclin D3 (pT283) protein.   |            |              |
| <b>Clonality</b>         | Polyclonal   |            |              |
| <b>Form</b>              | Liquid in 0.42% Potassium phosphate, 0.87% Sodium chloride, pH 7.3, 30% glycerol, and 0.01% sodium azide.  |            |              |
| <b>Dilution</b>          | WB (1/500 - 1/1000), IH (1/100 - 1/200)  |            |              |
| <b>Gene Symbol</b>       | CCND3  |            |              |
| <b>Alternative Names</b> | G1/S-specific cyclin-D3  |            |              |
| <b>Entrez Gene</b>       | 896 (Human); 12445 (Mouse); 25193 (Rat)  |            |              |
| <b>SwissProt</b>         | P30281 (Human); P30282 (Mouse); P48961 (Rat)   |            |              |
| <b>Storage/Stability</b> | Shipped at 4°C. Upon delivery aliquot and store at -20°C for one year. Avoid freeze/thaw cycles.   |            |              |

**Application key:** E- ELISA, WB- Western blot, IH- Immunohistochemistry, IF- Immunofluorescence, FC- Flow cytometry, IC- Immunocytochemistry, IP- Immunoprecipitation, ChIP- Chromatin Immunoprecipitation, EMSA- Electrophoretic Mobility Shift Assay, BL- Blocking, SE- Sandwich ELISA, CBE- Cell-based ELISA, RNAi- RNA interference

**Species reactivity key:** H- Human, M- Mouse, R- Rat, B- Bovine, C- Chicken, D- Dog, G- Goat, Mk- Monkey, P- Pig, Rb- Rabbit, S- Sheep, Z- Zebrafish

### COHESION BIOSCIENCES LIMITED

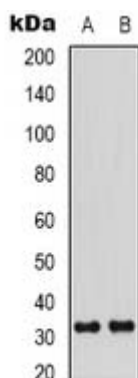
**WEB**  
[www.cohesionbio.com](http://www.cohesionbio.com)

**ORDER**  
[order@cohesionbio.com](mailto:order@cohesionbio.com)

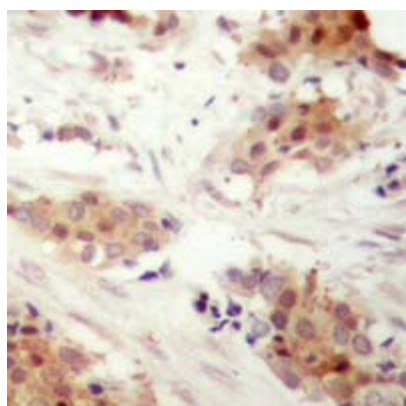
**SUPPORT**  
[techsupport@cohesionbio.com](mailto:techsupport@cohesionbio.com)

**CUSTOM**  
[custom@cohesionbio.com](mailto:custom@cohesionbio.com)

## Product Data Sheet



Western blot analysis of Cyclin D3 (pT283) expression in HepG2 UV-treated (A), K562 UV-treated (B) whole cell lysates.



Immunohistochemical analysis of Cyclin D3 (pT283) staining in human breast cancer formalin fixed paraffin embedded tissue section. The section was pre-treated using heat mediated antigen retrieval with sodium citrate buffer (pH 6.0). The section was then incubated with the antibody at room temperature and detected using an HRP conjugate compact polymer system. DAB was used as the chromogen. The section was then counterstained with haematoxylin and mounted with DPX.

**Application key:** E- ELISA, WB- Western blot, IH- Immunohistochemistry, IF- Immunofluorescence, FC- Flow cytometry, IC- Immunocytochemistry, IP- Immunoprecipitation, ChIP- Chromatin Immunoprecipitation, EMSA- Electrophoretic Mobility Shift Assay, BL- Blocking, SE- Sandwich ELISA, CBE- Cell-based ELISA, RNAi- RNA interference

**Species reactivity key:** H- Human, M- Mouse, R- Rat, B- Bovine, C- Chicken, D- Dog, G- Goat, Mk- Monkey, P- Pig, Rb- Rabbit, S- Sheep, Z- Zebrafish

**COHESION BIOSCIENCES LIMITED**

**WEB**  
[www.cohesionbio.com](http://www.cohesionbio.com)

**ORDER**  
[order@cohesionbio.com](mailto:order@cohesionbio.com)

**SUPPORT**  
[techsupport@cohesionbio.com](mailto:techsupport@cohesionbio.com)

**CUSTOM**  
[custom@cohesionbio.com](mailto:custom@cohesionbio.com)