

Product Data Sheet

Anti-CD13 Antibody-PE labeled

Catalog #	Source	Reactivity	Applications
CPA8408	Mouse	H	IF, FC
Description	Mouse monoclonal antibody to CD13 (PE)		
Purification	The antibody was purified by affinity chromatography.		
Specificity	Recognises human CD13.		
Clonality	Monoclonal		
Conjugation	PE		
Form	IgG2b. Liquid in PBS, pH 7.3, 0.2% BSA, and 0.02% sodium azide.		
Gene Symbol	ANPEP		
Alternative Names	APN; CD13; PEPN; Aminopeptidase N; AP-N; hAPN; Alanyl aminopeptidase; Aminopeptidase M; AP-M; Microsomal aminopeptidase; Myeloid plasma membrane glycoprotein CD13; gp150; CD antigen CD13		
Entrez Gene	290 (Human)		
SwissProt	P15144 (Human)		
Storage/Stability	Shipped and store at 4°C for one year. Do not freeze.		
Directions for Use	<ol style="list-style-type: none"> 1. Take 100 ul peripheral blood anticoagulated by EDTA and add to the bottom of 5 ml tube. 2. Add 10 ul labeled antibody to the bottom of flow tube mixing with the whole blood, incubate for 20 minutes at room temperature away from light. 3. Add 2 ml RBC lysis buffer, incubate for 10 minutes away from light after mixing, dissolve red blood cells. 4. Sample tube is set to 1000 rpm centrifugation for 5 minutes, discard the supernatant. 		

Application key: E- ELISA, WB- Western blot, IH- Immunohistochemistry, IF- Immunofluorescence, FC- Flow cytometry, IC- Immunocytochemistry, IP- Immunoprecipitation, ChIP- Chromatin Immunoprecipitation, EMSA- Electrophoretic Mobility Shift Assay, BL- Blocking, SE- Sandwich ELISA, CBE- Cell-based ELISA, RNAi- RNA interference

Species reactivity key: H- Human, M- Mouse, R- Rat, B- Bovine, C- Chicken, D- Dog, G- Goat, Mk- Monkey, P- Pig, Rb- Rabbit, S- Sheep, Z- Zebrafish

COHESION BIOSCIENCES LIMITED

WEB
www.cohesionbio.com

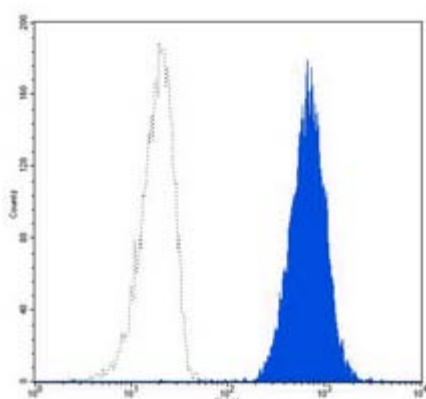
ORDER
order@cohesionbio.com

SUPPORT
techsupport@cohesionbio.com

CUSTOM
custom@cohesionbio.com

Product Data Sheet

5. Add 2 ml PBS wash buffer to resuspend the cells, then 1000 rpm centrifugation for 5 minutes, discard the supernatant.
6. Add 0.5 ml PBS wash buffer to resuspend the cells and detect by flow cytometry (sample should be determined on the day on the machine and can also be added fixation overnight at 4 °C then measured).



Flow cytometric analysis of human peripheral blood granulocytes using Anti-CD13 Antibody-PE labeled.

Application key: E- ELISA, WB- Western blot, IH- Immunohistochemistry, IF- Immunofluorescence, FC- Flow cytometry, IC- Immunocytochemistry, IP- Immunoprecipitation, ChIP- Chromatin Immunoprecipitation, EMSA- Electrophoretic Mobility Shift Assay, BL- Blocking, SE- Sandwich ELISA, CBE- Cell-based ELISA, RNAi- RNA interference

Species reactivity key: H- Human, M- Mouse, R- Rat, B- Bovine, C- Chicken, D- Dog, G- Goat, Mk- Monkey, P- Pig, Rb- Rabbit, S- Sheep, Z- Zebrafish

COHESION BIOSCIENCES LIMITED

WEB
www.cohesionbio.com

ORDER
order@cohesionbio.com

SUPPORT
techsupport@cohesionbio.com

CUSTOM
custom@cohesionbio.com