

Product Data Sheet

Anti-CD41 Antibody-PE-Cy5 labeled

Catalog #	Source	Reactivity	Applications
CPA8479	Mouse	H	IF, FC
Description	Mouse monoclonal antibody to CD41 (PE-Cy5)		
Purification	The antibody was purified by affinity chromatography.		
Specificity	Recognises human CD41.		
Clonality	Monoclonal		
Conjugation	PE-Cy5		
Form	IgG1. Liquid in PBS, pH 7.3, 0.2% BSA, and 0.02% sodium azide.		
Gene Symbol	ITGA2B		
Alternative Names	GP2B; ITGAB; Integrin alpha-IIb; GPalpha IIb; GPIIb; Platelet membrane glycoprotein IIb; CD antigen CD41)		
Entrez Gene	3674 (Human)		
SwissProt	P08514 (Human)		
Storage/Stability	Shipped and store at 4°C for one year. Do not freeze.		
Directions for Use	<ol style="list-style-type: none"> 1. Take 100 ul peripheral blood anticoagulated by EDTA and add to the bottom of 5 ml tube. 2. Add 10 ul labeled antibody to the bottom of flow tube mixing with the whole blood, incubate for 20 minutes at room temperature away from light. 3. Add 2 ml RBC lysis buffer, incubate for 10 minutes away from light after mixing, dissolve red blood cells. 4. Sample tube is set to 1000 rpm centrifugation for 5 minutes, discard the supernatant. 5. Add 2 ml PBS wash buffer to resuspend the cells, then 1000 rpm centrifugation for 		

Application key: E- ELISA, WB- Western blot, IH- Immunohistochemistry, IF- Immunofluorescence, FC- Flow cytometry, IC- Immunocytochemistry, IP- Immunoprecipitation, ChIP- Chromatin Immunoprecipitation, EMSA- Electrophoretic Mobility Shift Assay, BL- Blocking, SE- Sandwich ELISA, CBE- Cell-based ELISA, RNAi- RNA interference

Species reactivity key: H- Human, M- Mouse, R- Rat, B- Bovine, C- Chicken, D- Dog, G- Goat, Mk- Monkey, P- Pig, Rb- Rabbit, S- Sheep, Z- Zebrafish

COHESION BIOSCIENCES LIMITED

WEB
www.cohesionbio.com

ORDER
order@cohesionbio.com

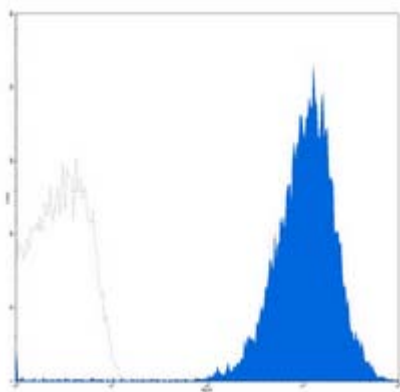
SUPPORT
techsupport@cohesionbio.com

CUSTOM
custom@cohesionbio.com

Product Data Sheet

5 minutes, discard the supernatant.

6. Add 0.5 ml PBS wash buffer to resuspend the cells and detect by flow cytometry (sample should be determined on the day on the machine and can also be added fixation overnight at 4 °C then measured).



Flow cytometric analysis of human platelet using Anti-CD41 Antibody-PE-Cy5 labeled.

Application key: E- ELISA, WB- Western blot, IH- Immunohistochemistry, IF- Immunofluorescence, FC- Flow cytometry, IC- Immunocytochemistry, IP- Immunoprecipitation, ChIP- Chromatin Immunoprecipitation, EMSA- Electrophoretic Mobility Shift Assay, BL- Blocking, SE- Sandwich ELISA, CBE- Cell-based ELISA, RNAi- RNA interference

Species reactivity key: H- Human, M- Mouse, R- Rat, B- Bovine, C- Chicken, D- Dog, G- Goat, Mk- Monkey, P- Pig, Rb- Rabbit, S- Sheep, Z- Zebrafish

COHESION BIOSCIENCES LIMITED

WEB
www.cohesionbio.com

ORDER
order@cohesionbio.com

SUPPORT
techsupport@cohesionbio.com

CUSTOM
custom@cohesionbio.com