

# Product Data Sheet

## Anti-CD32 Antibody

Catalog #	Source	Reactivity	Applications
CPA8516	Mouse	H	IF, FC
Description	Mouse monoclonal antibody to CD32		
Purification	The antibody was purified by affinity chromatography.		
Specificity	Recognises human CD32.		
Clonality	Monoclonal		
Conjugation			
Form	IgG2a. Liquid in PBS, pH 7.3, and 0.02% sodium azide.		
Gene Symbol	FCGR2A		
Alternative Names	CD32; FCG2; FCGR2A1; IGFR2; Low affinity immunoglobulin gamma Fc region receptor II-a; IgG Fc receptor II-a; CDw32; Fc-gamma RII-a; Fc-gamma-RIIa; FcRII-a		
Entrez Gene	2212; 2213; 9103 (Human)		
SwissProt	P12318; P31994; P31995 (Human)		
Storage/Stability	Shipped and store at 4°C for one year. Do not freeze.		
Directions for Use	<div>1. Take 100 ul peripheral blood anticoagulated by EDTA and add to the bottom of 5 ml tube.</div> <div>2. Add appropriate amount of antibody to the bottom of flow tube mixing with the whole blood; incubate for 30 minutes at room temperature.</div> <div>3. Add 2 ml RBC lysis buffer; incubate for 10 minutes after mixing; dissolve red blood cells.</div> <div>4. Sample tube is set to 1000 rpm centrifugation for 5 minutes; discard the supernatant.</div> <div>5. Add 2 ml PBS wash buffer to resuspend the cells; then 1000 rpm centrifugation</div>		
<b>Application key:</b> E- ELISA, WB- Western blot, IH- Immunohistochemistry, IF- Immunofluorescence, FC- Flow cytometry, IC- Immunocytochemistry, IP- Immunoprecipitation, ChIP- Chromatin Immunoprecipitation, EMSA- Electrophoretic Mobility Shift Assay, BL- Blocking, SE- Sandwich ELISA, CBE- Cell-based ELISA, RNAi- RNA interference			
<b>Species reactivity key:</b> H- Human, M- Mouse, R- Rat, B- Bovine, C- Chicken, D- Dog, G- Goat, Mk- Monkey, P- Pig, Rb- Rabbit, S- Sheep, Z- Zebrafish			

### COHESION BIOSCIENCES LIMITED

**WEB**  
www.cohesionbio.com

**ORDER**  
order@cohesionbio.com

**SUPPORT**  
techsupport@cohesionbio.com

**CUSTOM**  
custom@cohesionbio.com

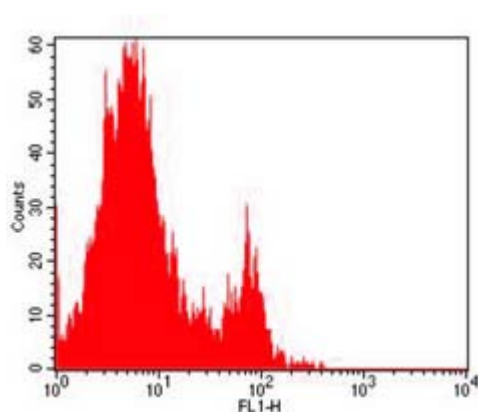
# Product Data Sheet

for 5 minutes; discard the supernatant.

6. Add appropriate amount of fluorescent-labeled anti-mouse IgGs and incubate for 20 minutes away from light at room temperature.

7. Add 2 ml PBS wash buffer to resuspend the cells; then 1000 rpm centrifugation for 5 minutes; discard the supernatant.

8. Add 0.5 ml PBS wash buffer to resuspend the cells and detect by flow cytometry (sample should be determined on the day on the machine and can also be added fixation overnight at 4 °C then measured).



Flow cytometric analysis of human peripheral blood lymphocytes using Anti-CD32 Antibody, followed by anti-mouse IgG PE.

**Application key:** E- ELISA, WB- Western blot, IH- Immunohistochemistry, IF- Immunofluorescence, FC- Flow cytometry, IC- Immunocytochemistry, IP- Immunoprecipitation, ChIP- Chromatin Immunoprecipitation, EMSA- Electrophoretic Mobility Shift Assay, BL- Blocking, SE- Sandwich ELISA, CBE- Cell-based ELISA, RNAi- RNA interference

**Species reactivity key:** H- Human, M- Mouse, R- Rat, B- Bovine, C- Chicken, D- Dog, G- Goat, Mk- Monkey, P- Pig, Rb- Rabbit, S- Sheep, Z- Zebrafish

**COHESION BIOSCIENCES LIMITED**

**WEB**  
[www.cohesionbio.com](http://www.cohesionbio.com)

**ORDER**  
[order@cohesionbio.com](mailto:order@cohesionbio.com)

**SUPPORT**  
[techsupport@cohesionbio.com](mailto:techsupport@cohesionbio.com)

**CUSTOM**  
[custom@cohesionbio.com](mailto:custom@cohesionbio.com)