

# Product Data Sheet

## Anti-CD62L Antibody

Catalog #	Source	Reactivity	Applications
CPA8546	Mouse	H	IF, FC
<b>Description</b>	Mouse monoclonal antibody to CD62L		
<b>Purification</b>	The antibody was purified by affinity chromatography.		
<b>Specificity</b>	Recognises human CD62L.		
<b>Clonality</b>	Monoclonal		
<b>Conjugation</b>			
<b>Form</b>	IgG1. Liquid in PBS, pH 7.3, and 0.02% sodium azide.		
<b>Gene Symbol</b>	SELL		
<b>Alternative Names</b>	LNHR; LYAM1; L-selectin; CD62 antigen-like family member L; Leukocyte adhesion molecule 1; LAM-1; Leukocyte surface antigen Leu-8; Leukocyte-endothelial cell adhesion molecule 1; LECAM1; Lymph node homing receptor; TQ1; gp90-MEL; CD antigen CD62L		
<b>Entrez Gene</b>	6402 (Human)		
<b>SwissProt</b>	P14151 (Human)		
<b>Storage/Stability</b>	Shipped and store at 4°C for one year. Do not freeze.		
<b>Directions for Use</b>	<ol style="list-style-type: none"> <li>1. Take 100 ul peripheral blood anticoagulated by EDTA and add to the bottom of 5 ml tube.</li> <li>2. Add appropriate amount of antibody to the bottom of flow tube mixing with the whole blood; incubate for 30 minutes at room temperature.</li> <li>3. Add 2 ml RBC lysis buffer; incubate for 10 minutes after mixing; dissolve red blood cells.</li> <li>4. Sample tube is set to 1000 rpm centrifugation for 5 minutes; discard the</li> </ol>		

**Application key:** E- ELISA, WB- Western blot, IH- Immunohistochemistry, IF- Immunofluorescence, FC- Flow cytometry, IC- Immunocytochemistry, IP- Immunoprecipitation, ChIP- Chromatin Immunoprecipitation, EMSA- Electrophoretic Mobility Shift Assay, BL- Blocking, SE- Sandwich ELISA, CBE- Cell-based ELISA, RNAi- RNA interference

**Species reactivity key:** H- Human, M- Mouse, R- Rat, B- Bovine, C- Chicken, D- Dog, G- Goat, Mk- Monkey, P- Pig, Rb- Rabbit, S- Sheep, Z- Zebrafish

### COHESION BIOSCIENCES LIMITED

**WEB**  
www.cohesionbio.com

**ORDER**  
order@cohesionbio.com

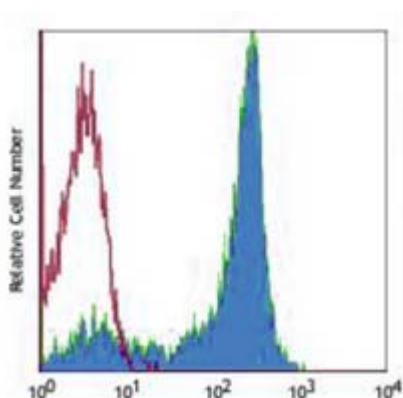
**SUPPORT**  
techsupport@cohesionbio.com

**CUSTOM**  
custom@cohesionbio.com

# Product Data Sheet

supernatant.

5. Add 2 ml PBS wash buffer to resuspend the cells; then 1000 rpm centrifugation for 5 minutes; discard the supernatant.
6. Add appropriate amount of fluorescent-labeled anti-mouse IgGs and incubate for 20 minutes away from light at room temperature.
7. Add 2 ml PBS wash buffer to resuspend the cells; then 1000 rpm centrifugation for 5 minutes; discard the supernatant.
8. Add 0.5 ml PBS wash buffer to resuspend the cells and detect by flow cytometry (sample should be determined on the day on the machine and can also be added fixation overnight at 4 °C then measured).



Flow cytometric analysis of human peripheral blood lymphocytes using Anti-CD62L Antibody, followed by anti-mouse IgG PE.

**Application key:** E- ELISA, WB- Western blot, IH- Immunohistochemistry, IF- Immunofluorescence, FC- Flow cytometry, IC- Immunocytochemistry, IP- Immunoprecipitation, ChIP- Chromatin Immunoprecipitation, EMSA- Electrophoretic Mobility Shift Assay, BL- Blocking, SE- Sandwich ELISA, CBE- Cell-based ELISA, RNAi- RNA interference

**Species reactivity key:** H- Human, M- Mouse, R- Rat, B- Bovine, C- Chicken, D- Dog, G- Goat, Mk- Monkey, P- Pig, Rb- Rabbit, S- Sheep, Z- Zebrafish

**COHESION BIOSCIENCES LIMITED**

**WEB**  
[www.cohesionbio.com](http://www.cohesionbio.com)

**ORDER**  
[order@cohesionbio.com](mailto:order@cohesionbio.com)

**SUPPORT**  
[techsupport@cohesionbio.com](mailto:techsupport@cohesionbio.com)

**CUSTOM**  
[custom@cohesionbio.com](mailto:custom@cohesionbio.com)