

Product Data Sheet

Anti-Beta-tubulin Antibody

Catalog #	Source	Reactivity	Applications
CPA9128	Mouse	H, M, R, Mk, D, C, Rb	WB, IH, IP
Description	Mouse monoclonal to Beta-tubulin		
Immunogen	KLH-conjugated synthetic peptide encompassing a sequence of human Beta-tubulin. The exact sequence is proprietary.		
Purification			
Specificity	Recognizes endogenous levels of Beta-tubulin protein.		
Clonality	Monoclonal		
Form	Liquid in 0.42% Potassium phosphate, 0.87% Sodium chloride, pH 7.3, 0.2% BSA, 30% glycerol, and 0.01% sodium azide.		
Dilution	WB (1/1000 - 1/3000), IH (1/50 - 1/100), IP (1/50 - 1/100)		
Gene Symbol	TUBB3		
Alternative Names	TUBB4; Tubulin beta-3 chain; Tubulin beta-4 chain; Tubulin beta-III		
Entrez Gene	10381 (Human); 22152 (Mouse); 246118 (Rat)		
SwissProt	Q13509 (Human); Q9ERD7 (Mouse); Q4QRB4 (Rat)		
Storage/Stability	Shipped at 4°C. Upon delivery aliquot and store at -20°C for one year. Avoid freeze/thaw cycles.		

Application key: E- ELISA, WB- Western blot, IH- Immunohistochemistry, IF- Immunofluorescence, FC- Flow cytometry, IC- Immunocytochemistry, IP- Immunoprecipitation, ChIP- Chromatin Immunoprecipitation, EMSA- Electrophoretic Mobility Shift Assay, BL- Blocking, SE- Sandwich ELISA, CBE- Cell-based ELISA, RNAi- RNA interference

Species reactivity key: H- Human, M- Mouse, R- Rat, B- Bovine, C- Chicken, D- Dog, G- Goat, Mk- Monkey, P- Pig, Rb- Rabbit, S- Sheep, Z- Zebrafish

COHESION BIOSCIENCES LIMITED

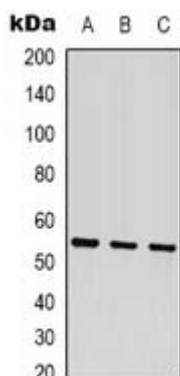
WEB
www.cohesionbio.com

ORDER
order@cohesionbio.com

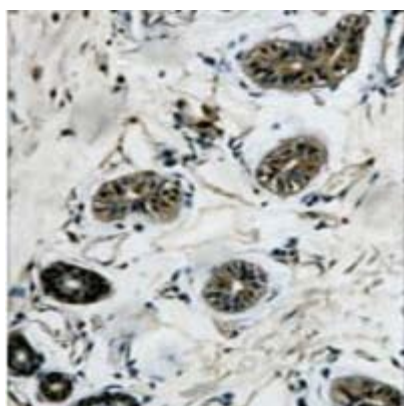
SUPPORT
techsupport@cohesionbio.com

CUSTOM
custom@cohesionbio.com

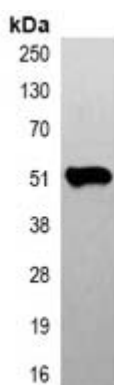
Product Data Sheet



Western blot analysis of Beta-tubulin expression in Hela (A), mouse kidney (B), rat heart (C) whole cell lysates.



Immunohistochemical analysis of Beta-tubulin staining in human colon formalin fixed paraffin embedded tissue section. The section was pre-treated using heat mediated antigen retrieval with sodium citrate buffer (pH 6.0). The section was then incubated with the antibody at room temperature and detected using an HRP conjugated compact polymer system. DAB was used as the chromogen. The section was then counterstained with haematoxylin and mounted with DPX.



Immunoprecipitation of Beta-tubulin from 0.5mg mouse brain whole cell extract lysate, using Anti-Beta-tubulin Antibody.

Application key: E- ELISA, WB- Western blot, IH- Immunohistochemistry, IF- Immunofluorescence, FC- Flow cytometry, IC- Immunocytochemistry, IP- Immunoprecipitation, ChIP- Chromatin Immunoprecipitation, EMSA- Electrophoretic Mobility Shift Assay, BL- Blocking, SE- Sandwich ELISA, CBE- Cell-based ELISA, RNAi- RNA interference

Species reactivity key: H- Human, M- Mouse, R- Rat, B- Bovine, C- Chicken, D- Dog, G- Goat, Mk- Monkey, P- Pig, Rb- Rabbit, S- Sheep, Z- Zebrafish

COHESION BIOSCIENCES LIMITED

WEB
www.cohesionbio.com

ORDER
order@cohesionbio.com

SUPPORT
techsupport@cohesionbio.com

CUSTOM
custom@cohesionbio.com