

## Product Data Sheet

## Anti-GLP-1 Receptor Antibody

Catalog #	Source	Reactivity	Applications
CPA9299	Rabbit	H, M, R	WB, IH
<b>Description</b>	Rabbit polyclonal to GLP-1 Receptor		
<b>Immunogen</b>	KLH-conjugated synthetic peptide encompassing a sequence of human GLP-1 Receptor. The exact sequence is proprietary.		
<b>Purification</b>	The antibody was purified by affinity chromatography.		
<b>Specificity</b>	Recognizes endogenous levels of GLP-1 Receptor protein.		
<b>Clonality</b>	Polyclonal		
<b>Form</b>	Liquid in 0.42% Potassium phosphate, 0.87% Sodium chloride, pH 7.3, 30% glycerol, and 0.01% sodium azide.		
<b>Dilution</b>	WB (1/500 - 1/1000), IH (1/100 - 1/200)		
<b>Gene Symbol</b>	GLP1R		
<b>Alternative Names</b>	Glucagon-like peptide 1 receptor; GLP-1 receptor; GLP-1-R; GLP-1R		
<b>Entrez Gene</b>	2740 (Human)		
<b>SwissProt</b>	P43220 (Human)		
<b>Storage/Stability</b>	Shipped at 4°C. Upon delivery aliquot and store at -20°C for one year. Avoid freeze/thaw cycles.		

**Application key:** E- ELISA, WB- Western blot, IH- Immunohistochemistry, IF- Immunofluorescence, FC- Flow cytometry, IC- Immunocytochemistry, IP- Immunoprecipitation, ChIP- Chromatin Immunoprecipitation, EMSA- Electrophoretic Mobility Shift Assay, BL- Blocking, SE- Sandwich ELISA, CBE- Cell-based ELISA, RNAi- RNA interference

**Species reactivity key:** H- Human, M- Mouse, R- Rat, B- Bovine, C- Chicken, D- Dog, G- Goat, Mk- Monkey, P- Pig, Rb- Rabbit, S- Sheep, Z- Zebrafish

## COHESION BIOSCIENCES LIMITED

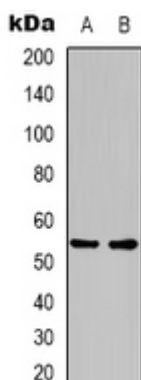
WEB  
[www.cohesionbio.com](http://www.cohesionbio.com)

ORDER  
[order@cohesionbio.com](mailto:order@cohesionbio.com)

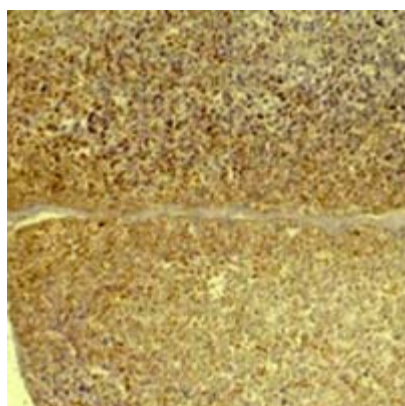
SUPPORT  
[techsupport@cohesionbio.com](mailto:techsupport@cohesionbio.com)

CUSTOM  
[custom@cohesionbio.com](mailto:custom@cohesionbio.com)

## Product Data Sheet



Western blot analysis of GLP-1 Receptor expression in mouse brain (A), rat brain (B) whole cell lysates.



Immunohistochemical analysis of GLP-1 Receptor staining in human pancreas formalin fixed paraffin embedded tissue section. The section was pre-treated using heat mediated antigen retrieval with sodium citrate buffer (pH 6.0). The section was then incubated with the antibody at room temperature and detected using an HRP conjugated compact polymer system. DAB was used as the chromogen. The section was then counterstained with haematoxylin and mounted with DPX.

**Application key:** E- ELISA, WB- Western blot, IH- Immunohistochemistry, IF- Immunofluorescence, FC- Flow cytometry, IC- Immunocytochemistry, IP- Immunoprecipitation, ChIP- Chromatin Immunoprecipitation, EMSA- Electrophoretic Mobility Shift Assay, BL- Blocking, SE- Sandwich ELISA, CBE- Cell-based ELISA, RNAi- RNA interference

**Species reactivity key:** H- Human, M- Mouse, R- Rat, B- Bovine, C- Chicken, D- Dog, G- Goat, Mk- Monkey, P- Pig, Rb- Rabbit, S- Sheep, Z- Zebrafish

**COHESION BIOSCIENCES LIMITED**

**WEB**  
[www.cohesionbio.com](http://www.cohesionbio.com)

**ORDER**  
[order@cohesionbio.com](mailto:order@cohesionbio.com)

**SUPPORT**  
[techsupport@cohesionbio.com](mailto:techsupport@cohesionbio.com)

**CUSTOM**  
[custom@cohesionbio.com](mailto:custom@cohesionbio.com)