

Product Data Sheet

Anti-Histone H4 (DiMethyl K59) Antibody

Catalog #	Source	Reactivity	Applications
CPA9386	Rabbit	H, M, R	WB, IH
Description	Rabbit polyclonal to Histone H4 (DiMethyl K59)		
Immunogen	KLH-conjugated synthetic peptide encompassing a sequence of human Histone H4. The exact sequence is proprietary.		
Purification	The antibody was purified by affinity chromatography.		
Specificity	Recognizes endogenous levels of Histone H4 (DiMethyl K59) protein.		
Clonality	Polyclonal		
Form	Liquid in 0.42% Potassium phosphate, 0.87% Sodium chloride, pH 7.3, 30% glycerol, and 0.01% sodium azide.		
Dilution	WB (1/500 - 1/1000), IH (1/100 - 1/200)		
Gene Symbol	HIST1H4A; HIST1H4B; HIST1H4C; HIST1H4D; HIST1H4E; HIST1H4F; HIST1H4H; HIST1H4I; HIST1H4J; HIST1H4K; HIST1H4L; HIST2H4A; HIST2H4B; HIST4H4		
Alternative Names	H4/A; H4FA; H4/I; H4FI; H4/G; H4FG; H4/B; H4FB; H4/J; H4FJ; H4/C; H4FC; H4/H; H4FH; H4/M; H4FM; H4/E; H4FE; H4/D; H4FD; H4/K; H4FK; H4/N; H4F2; H4FN; HIST2H4; H4/O; H4FO; Histone H4		
Entrez Gene	121504 (Human); 100041230 (Mouse); 100360950 (Rat)		
SwissProt	P62805 (Human); P62806 (Mouse); P62804 (Rat)		
Storage/Stability	Shipped at 4°C. Upon delivery aliquot and store at -20°C for one year. Avoid freeze/thaw cycles.		

Application key: E- ELISA, WB- Western blot, IH- Immunohistochemistry, IF- Immunofluorescence, FC- Flow cytometry, IC- Immunocytochemistry, IP- Immunoprecipitation, ChIP- Chromatin Immunoprecipitation, EMSA- Electrophoretic Mobility Shift Assay, BL- Blocking, SE- Sandwich ELISA, CBE- Cell-based ELISA, RNAi- RNA interference

Species reactivity key: H- Human, M- Mouse, R- Rat, B- Bovine, C- Chicken, D- Dog, G- Goat, Mk- Monkey, P- Pig, Rb- Rabbit, S- Sheep, Z- Zebrafish

COHESION BIOSCIENCES LIMITED

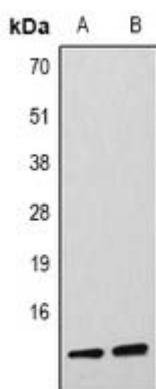
WEB
www.cohesionbio.com

ORDER
order@cohesionbio.com

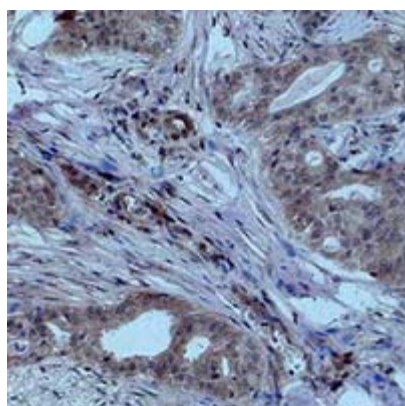
SUPPORT
techsupport@cohesionbio.com

CUSTOM
custom@cohesionbio.com

Product Data Sheet



Western blot analysis of Histone H4 (DiMethyl K59) expression in HeLa (A), NIH3T3 (B) whole cell lysates.



Immunohistochemical analysis of Histone H4 (DiMethyl K59) staining in human breast cancer formalin fixed paraffin embedded tissue section. The section was pre-treated using heat mediated antigen retrieval with sodium citrate buffer (pH 6.0). The section was then incubated with the antibody at room temperature and detected using an HRP conjugated compact polymer system. DAB was used as the chromogen. The section was then counterstained with haematoxylin and mounted with DPX.

Application key: E- ELISA, WB- Western blot, IH- Immunohistochemistry, IF- Immunofluorescence, FC- Flow cytometry, IC- Immunocytochemistry, IP- Immunoprecipitation, ChIP- Chromatin Immunoprecipitation, EMSA- Electrophoretic Mobility Shift Assay, BL- Blocking, SE- Sandwich ELISA, CBE- Cell-based ELISA, RNAi- RNA interference

Species reactivity key: H- Human, M- Mouse, R- Rat, B- Bovine, C- Chicken, D- Dog, G- Goat, Mk- Monkey, P- Pig, Rb- Rabbit, S- Sheep, Z- Zebrafish

COHESION BIOSCIENCES LIMITED

WEB
www.cohesionbio.com

ORDER
order@cohesionbio.com

SUPPORT
techsupport@cohesionbio.com

CUSTOM
custom@cohesionbio.com