

# Product Data Sheet

## Anti-Lsh Antibody

| Catalog #                | Source  | Reactivity | Applications        |
|--------------------------|---|------------|---------------------|
| CQA1280                  | Rabbit  | H, M, R    | WB, IF/IC, IP, ChIP |
| <b>Description</b>       | Rabbit polyclonal antibody to Lsh   |            |                     |
| <b>Immunogen</b>         | Recombinant full length protein of human Lsh  |            |                     |
| <b>Purification</b>      | The antibody was purified by immunogen affinity chromatography.   |            |                     |
| <b>Specificity</b>       | Recognizes endogenous levels of Lsh protein.  |            |                     |
| <b>Clonality</b>         | Polyclonal  |            |                     |
| <b>Conjugation</b>       |   |            |                     |
| <b>Form</b>              | Liquid in 0.42% Potassium phosphate, 0.87% Sodium chloride, pH 7.3, 30% glycerol, and 0.01% sodium azide.   |            |                     |
| <b>Dilution</b>          | WB (1/500 - 1/2000), IF/IC (1/50 - 1/200), IP (1/50 - 1/200), ChIP (1/20 - 1/100)   |            |                     |
| <b>Gene Symbol</b>       | HELLS   |            |                     |
| <b>Alternative Names</b> | PASG; SMARCA6; Lymphoid-specific helicase; Proliferation-associated SNF2-like protein; SWI/SNF2-related matrix-associated actin-dependent regulator of chromatin subfamily A member 6 |            |                     |
| <b>Entrez Gene</b>       | 3070 (Human); 15201 (Mouse)   |            |                     |
| <b>SwissProt</b>         | Q9NRZ9 (Human); Q60848 (Mouse)  |            |                     |
| <b>Storage/Stability</b> | Shipped at 4°C. Upon delivery aliquot and store at -20°C for one year. Avoid freeze/thaw cycles.  |            |                     |

**Application key:** E- ELISA, WB- Western blot, IH- Immunohistochemistry, IF- Immunofluorescence, FC- Flow cytometry, IC- Immunocytochemistry, IP- Immunoprecipitation, ChIP- Chromatin Immunoprecipitation, EMSA- Electrophoretic Mobility Shift Assay, BL- Blocking, SE- Sandwich ELISA, CBE- Cell-based ELISA, RNAi- RNA interference

**Species reactivity key:** H- Human, M- Mouse, R- Rat, B- Bovine, C- Chicken, D- Dog, G- Goat, Mk- Monkey, P- Pig, Rb- Rabbit, S- Sheep, Z- Zebrafish

### COHESION BIOSCIENCES LIMITED

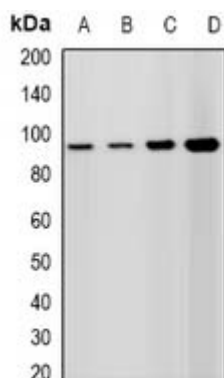
**WEB**  
www.cohesionbio.com

**ORDER**  
order@cohesionbio.com

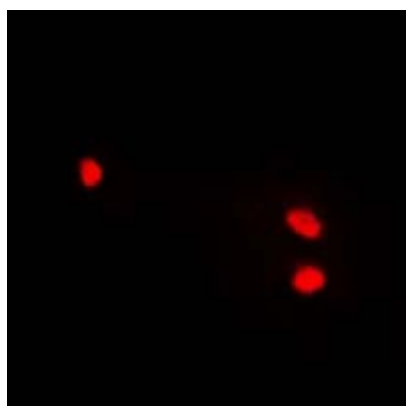
**SUPPORT**  
techsupport@cohesionbio.com

**CUSTOM**  
custom@cohesionbio.com

## Product Data Sheet



Western blot analysis of Lsh expression in A549 (A), HepG2 (B), mouse spleen (C), rat testis (D) whole cell lysates.



Immunofluorescent analysis of Lsh staining in A549 cells. Formalin-fixed cells were permeabilized with 0.1% Triton X-100 in TBS for 5-10 minutes and blocked with 3% BSA-PBS for 30 minutes at room temperature. Cells were probed with the primary antibody in 3% BSA-PBS and incubated overnight at 4 °C in a humidified chamber. Cells were washed with PBST and incubated with a DyLight 594-conjugated secondary antibody (red) in PBS at room temperature in the dark.

**Application key:** E- ELISA, WB- Western blot, IH- Immunohistochemistry, IF- Immunofluorescence, FC- Flow cytometry, IC- Immunocytochemistry, IP- Immunoprecipitation, ChIP- Chromatin Immunoprecipitation, EMSA- Electrophoretic Mobility Shift Assay, BL- Blocking, SE- Sandwich ELISA, CBE- Cell-based ELISA, RNAi- RNA interference

**Species reactivity key:** H- Human, M- Mouse, R- Rat, B- Bovine, C- Chicken, D- Dog, G- Goat, Mk- Monkey, P- Pig, Rb- Rabbit, S- Sheep, Z- Zebrafish

**COHESION BIOSCIENCES LIMITED**

**WEB**  
[www.cohesionbio.com](http://www.cohesionbio.com)

**ORDER**  
[order@cohesionbio.com](mailto:order@cohesionbio.com)

**SUPPORT**  
[techsupport@cohesionbio.com](mailto:techsupport@cohesionbio.com)

**CUSTOM**  
[custom@cohesionbio.com](mailto:custom@cohesionbio.com)