



COSMO BIO CO., LTD.
Inspiration for Life Science

K0604

For research use only

Anti Human klotho Monoclonal Antibody (Clone No. KM2119)

Code No. K0604
Category Others
Target klotho
Type Monoclonal Antibody
Concentration 0.25mg/ml
Contents (Volume) 50 μ g (200 μ L/vial)
Gene ID 9365
Primary Source HGNC:6344
Synonyms KL
Immunogen Human Klotho 801-954a.a.

Raised in Rat
Myeloma P3U1
Clone number KM2119
Purification ProteinG
Source Serum-free medium
Isotype IgG2b
Cross Reactivity Mouse
Label Unlabeled
Buffer PBS [containing 2% Block Ace as a stabilizer, 0.1% Proclin as a bacteriostat]
Storage Store below -20°C. Once thawed, store at 4°C. Repeated freeze-thaw cycles should be avoided.

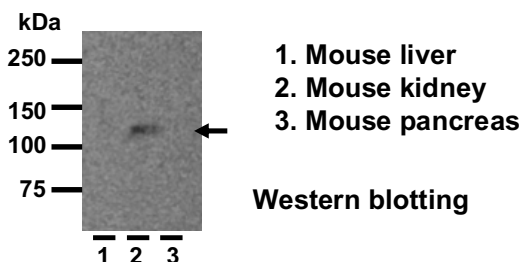
Application

WB, IHC

Recommended Antibody Dilutions

ELISA	WB	IHC	ICC
NotTested	1.0-5.0	Available	NotTested
P	FCM	F	Neutralization
NotTested	NotTested	NotTested	NotTested

(μ g/mL)



This antibody was prepared by Kyowa Hakko Kirin Co., Ltd.

UniProt Summary

May have weak glycosidase activity towards glucuronylated steroids. However, it lacks essential active site Glu residues at positions 239 and 872, suggesting it may be inactive as a glycosidase in vivo. May be involved in the regulation of calcium and phosphorus homeostasis by inhibiting the synthesis of active vitamin D By similarity. Essential factor for the specific interaction between FGF23 and FGFR1 By similarity. The Klotho peptide generated by cleavage of the membrane-bound isoform may be an anti-aging circulating hormone which would extend life span by inhibiting insulin/IGF1 signaling By similarity.

Reference

- 1) Kato Y, et al: Biochem Biophys Res Commun. 2000 Jan 19;267(2):597-602.*
- 2) Tohyama O, et al: J Biol Chem. 2004 Mar 12;279(11):9777-84.*
- 3) Imura A, et al: FEBS Lett. 2004 May 7;565(1-3):143-7.*
- 4) Imura A, et al: Science. 2007 Jun 15;316(5831):1615-8.
- 5) Brownstein CA, et al: Proc Natl Acad Sci U S A. 2008 Mar 4;105(9):3455-60.

Manufactured by Trans Genic Inc.



COSMO BIO CO., LTD.
Inspiration for Life Science

TOYO 2CHOME, KOTO-KU, TOKYO, 135-0016, JAPAN

URL: http://www.cosmobio.co.jp/index_e.asp E-mail: export@cosmobio.co.jp

[Outside Japan]

[国内連絡先]

Phone : +81-3-5632-9617

Phone : +81-3-5632-9610

FAX : +81-3-5632-9618

FAX : +81-3-5632-9619