

Recombinant Human AFP Protein, His-tagged

Cat. No. AFP-52H **Lot. No.** (See product label)

SPECIFICATION

Product Overview	Recombinant Human AFP (19-609aa) Protein with His tag at C-terminus was expressed in insect cell and purified by using conventional chromatography techniques.
Description	This gene encodes alpha-fetoprotein, a major plasma protein produced by the yolk sac and the liver during fetal life. Alpha-fetoprotein expression in adults is often associated with hepatocarcinoma and with teratoma, and has prognostic value for managing advanced gastric cancer. However, hereditary persistence of alpha-fetoprotein may also be found in individuals with no obvious pathology. The protein is thought to be the fetal counterpart of serum albumin, and the alpha-fetoprotein and albumin genes are present in tandem in the same transcriptional orientation on chromosome 4. Alpha-fetoprotein is found in monomeric as well as dimeric and trimeric forms, and binds copper, nickel, fatty acids and bilirubin. The level of alpha-fetoprotein in amniotic fluid is used to measure renal loss of protein to screen for spina bifida and anencephaly.
Source	Insect cell
Species	Human
Tag	His
Form	Liquid
Molecular Mass	67.5 kDa
Protein length	19-609

 Tel: 1-631-559-9269 1-516-512-3133

 Email: info@creative-biomart.com  Fax: 1-631-938-8127

 45-1 Ramsey Road, Shirley, NY 11967, USA

AA Sequence

```

RTLHRNEYGIASILDSYQCTAEISL ADLATIFFAQFVQEATYKEVSKMVK
DALTAIEKPTGDEQSSGCLNQLPA FLEELCHEKEILEKYGHSDCCSQSE
EGRHNCFLAHKKPTPASIPLFQVPE PVTSCAEYEEDRETFMNKFIEIAR
RHPFLYAPTILLWAARYDKIIPSCC KAENAVECFQTKAATVTKELRESSL
LNQHACAVMKNFGTRTFQAITVTKL SQKFTKVNFTETIQKLVLDAHVHEH
CCRGDVLDCLDQGEKIMSYICSQQD TLSNKITECCKLTTLERGQCIIHAE
NDEKPEGLSPNLNRFLGDRDFNQFS SGEKNIFLASFVHEYSRRHPQLAVS
VILRVAKGYQELLEKCFQTENPLEC QDKGEEELQKYIQESQALAKRSCGL
FQKLGEYYLQNAFLVAYTKKAPQLT SSELMAITRKMAATAATCCQLSEDK
LLACGEGAADIIGHLCIRHEMTPV NPGVGQCCTSSYANRRPCFSSLVVD
ETYVPPAFSDDKFIFHKDLCQAQGV ALQTMKQEFLINLVKQKPQITEEQL
EAVIADFSGLLEKCCQGQEQEVCFA EEGQKLISKTRAALGV

```

Endotoxin

<1.0 EU/μg of the protein by the LAL method.

Purity

>95% by SDS-PAGE

Applications

SDS-PAGE

Storage

Can be stored at +2 to +8 centigrade for 1 week. For long term storage, aliquot and store at -20 to -80 centigrade. Avoid repeated freezing and thawing cycles.

Concentration

0.5 mg/mL (determined by absorbance at 280nm)

Storage Buffer

Phosphate-Buffered Saline (pH 7.4) containing 10% glycerol

GENE INFORMATION

Gene Name

AFP alpha fetoprotein [Homo sapiens (human)]

Official Symbol

AFP

 Tel: 1-631-559-9269 1-516-512-3133

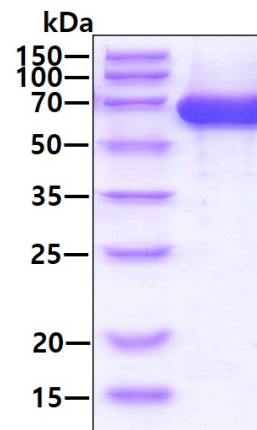
 Email: info@creative-biomart.com  Fax: 1-631-938-8127

 45-1 Ramsey Road, Shirley, NY 11967, USA


Synonyms	AFP; alpha fetoprotein; AFPD; FETA; HPAFP; alpha-fetoprotein; alpha-1-fetoprotein; alpha-fetoglobulin
Gene ID	174
mRNA Refseq	NM_001134
Protein Refseq	NP_001125
MIM	104150
UniProt ID	P02771

IMAGE


SDS-PAGE :



3 µg by SDS-PAGE under reducing condition and visualized by coomassie blue stain.

 Tel: 1-631-559-9269 1-516-512-3133

 Email: info@creative-biomart.com  Fax: 1-631-938-8127

 45-1 Ramsey Road, Shirley, NY 11967, USA