

# Recombinant Human ALCAM protein, His-tagged

**Cat. No.** ALCAM-3140H    **Lot. No.** (See product label)

## SPECIFICATION

<b>Product Overview</b>	Recombinant Human ALCAM protein(Q13740-1)(Trp28-Ala526), fused with C-terminal His tag, was expressed in HEK293.
<b>Species</b>	Human
<b>Source</b>	HEK293
<b>ProteinLength</b>	Trp28-Ala526
<b>Tag</b>	C-His
<b>Form</b>	Lyophilized from 0.22µm filtered solution in PBS (pH 7.4). Normally 8% trehalose is added as protectant before lyophilization.
<b>Bio-activity</b>	Immobilized Human ALCAM, His Tag at 2µg/ml (100µl/Well) on the plate. Dose response curve for Anti-ALCAM Antibody, hFc Tag with the EC50 of 0.28µg/ml determined by ELISA.
<b>Molecular Mass</b>	The protein has a predicted MW of 57 kDa. Due to glycosylation, the protein migrates to 60-80 kDa based on Tris-Bis PAGE result.
<b>Endotoxin</b>	Less than 1EU per µg by the LAL method.
<b>Purity</b>	> 95% as determined by Tris-Bis PAGE; > 95% as determined by HPLC

 Tel: 1-631-559-9269    1-516-512-3133

 Email: [info@creative-biomart.com](mailto:info@creative-biomart.com)     Fax: 1-631-938-8127

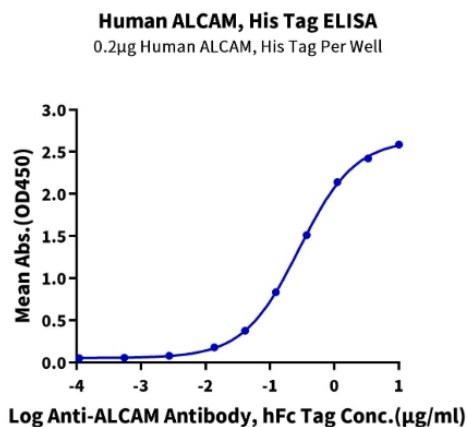
 45-1 Ramsey Road, Shirley, NY 11967, USA

<b>Storage</b>	Reconstituted protein stable at -80°C for 12 months, 4°C for 1 week. Use a manual defrost freezer and avoid repeated freeze-thaw cycles.
<b>Reconstitution</b>	Centrifuge tubes before opening. Reconstituting to a concentration more than 100 µg/ml is recommended. Dissolve the lyophilized protein in distilled water.
<b>GENE INFORMATION</b>	
<b>Gene Name</b>	ALCAM activated leukocyte cell adhesion molecule [ Homo sapiens ]
<b>Official Symbol</b>	ALCAM
<b>Synonyms</b>	ALCAM; activated leukocyte cell adhesion molecule; activated leucocyte cell adhesion molecule; CD166 antigen; CD166; MEMD; FLJ38514; MGC71733;
<b>Gene ID</b>	214
<b>mRNA Refseq</b>	NM_001243280
<b>Protein Refseq</b>	NP_001230209
<b>MIM</b>	601662
<b>UniProt ID</b>	Q13740

## Tris-Bis PAGE



## ELISA Data



Tel: 1-631-559-9269 1-516-512-3133

Email: [info@creative-biomart.com](mailto:info@creative-biomart.com) Fax: 1-631-938-8127

45-1 Ramsey Road, Shirley, NY 11967, USA