

Recombinant Human B2M protein, His-tagged

Cat. No. B2M-3237H **Lot. No.** (See product label)

SPECIFICATION

Product Overview	Recombinant Human B2M protein(P61769-1)(Ile21-Met119), fused with C-terminal His tag, was expressed in HEK293.
Species	Human
Source	HEK293
ProteinLength	Ile21-Met119
Tag	C-His
Form	Lyophilized from 0.22µm filtered solution in PBS (pH 7.4). Normally 5% trehalose is added as protectant before lyophilization.
Molecular Mass	The protein has a predicted MW of 12.8 kDa. Due to glycosylation, the protein migrates to 13-15 kDa based on Tris-Bis PAGE result.
Endotoxin	Less than 1EU per µg by the LAL method.
Purity	> 95% as determined by Tris-Bis PAGE; > 95% as determined by HPLC
Storage	Reconstituted protein stable at -80°C for 12 months, 4°C for 1 week. Use a manual defrost freezer and avoid repeated freeze-thaw cycles.
Reconstitution	Centrifuge tubes before opening. Reconstituting to a concentration more than 100

 Tel: 1-631-559-9269 1-516-512-3133

 Email: info@creative-biomart.com  Fax: 1-631-938-8127

 45-1 Ramsey Road, Shirley, NY 11967, USA


µg/ml is recommended. Dissolve the lyophilized protein in distilled water.

GENE INFORMATION

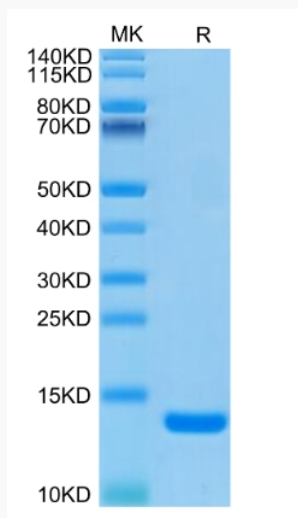
Gene Name	B2M beta-2-microglobulin [Homo sapiens]
Official Symbol	B2M
Synonyms	B2M; beta-2-microglobulin; beta-2-microglobin; beta chain of MHC class I molecules;
Gene ID	567
mRNA Refseq	NM_004048
Protein Refseq	NP_004039
MIM	109700
UniProt ID	P61769

 Tel: 1-631-559-9269 1-516-512-3133

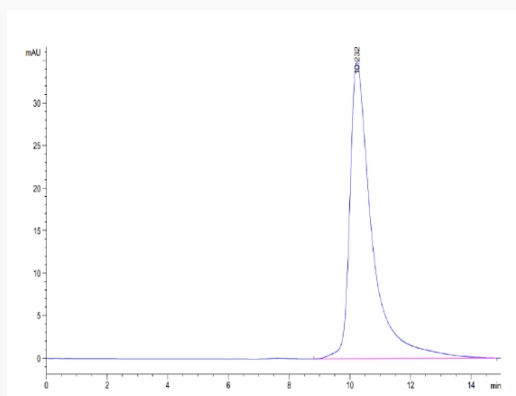
 Email: info@creative-biomart.com  Fax: 1-631-938-8127

 45-1 Ramsey Road, Shirley, NY 11967, USA

Tris-Bis PAGE



SEC-HPLC



Tel: 1-631-559-9269 1-516-512-3133

Email: info@creative-biomart.com Fax: 1-631-938-8127

45-1 Ramsey Road, Shirley, NY 11967, USA