

Recombinant Human CD24 protein, hFc-tagged

Cat. No. CD24-3133H **Lot. No.** (See product label)

SPECIFICATION

Product Overview	Recombinant Human CD24 protein(P25063)(Ser27-Gly59), fused with C-terminal hFc tag, was expressed in HEK293.
Species	Human
Source	HEK293
ProteinLength	Ser27-Gly59
Tag	C-hFc
Form	Lyophilized from 0.22µm filtered solution in PBS (pH 7.4). Normally 5% trehalose is added as protectant before lyophilization.
Bio-activity	Immobilized Human CD24, hFc Tag at 0.5µg/ml (100µl/well) on the plate. Dose response curve for Biotinylated Anti-CD24 Antibody, hFc Tag with the EC50 of 0.58µg/ml determined by ELISA.
Molecular Mass	The protein has a predicted MW of 29.9 kDa. Due to glycosylation, the protein migrates to 45-55 kDa based on Tris-Bis PAGE result.
Endotoxin	Less than 1EU per µg by the LAL method.
Purity	> 95% as determined by Tris-Bis PAGE; > 95% as determined by HPLC

 Tel: 1-631-559-9269 1-516-512-3133


 Email: info@creative-biomart.com  Fax: 1-631-938-8127

 45-1 Ramsey Road, Shirley, NY 11967, USA

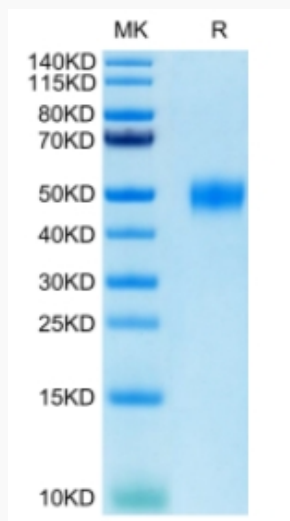
Storage	Reconstituted protein stable at -80°C for 12 months, 4°C for 1 week. Use a manual defrost freezer and avoid repeated freeze-thaw cycles.
Reconstitution	Centrifuge tubes before opening. Reconstituting to a concentration more than 100 µg/ml is recommended. Dissolve the lyophilized protein in distilled water.
GENE INFORMATION	
Gene Name	CD24 CD24 molecule [Homo sapiens]
Official Symbol	CD24
Synonyms	CD24; CD24 molecule; CD24 antigen (small cell lung carcinoma cluster 4 antigen); signal transducer CD24; CD24A; FLJ22950; FLJ43543; MGC75043;
Gene ID	100133941
mRNA Refseq	NM_013230
Protein Refseq	NP_037362
MIM	600074
UniProt ID	P25063

 Tel: 1-631-559-9269 1-516-512-3133

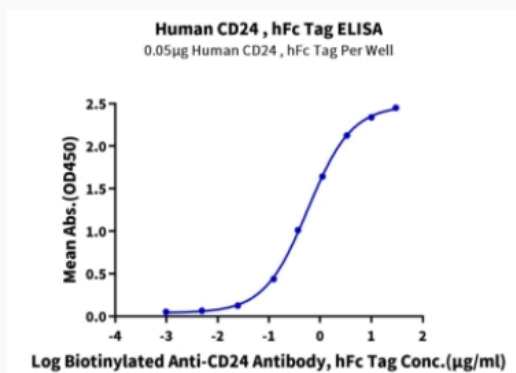
 Email: info@creative-biomart.com  Fax: 1-631-938-8127

 45-1 Ramsey Road, Shirley, NY 11967, USA

Tris-Bis PAGE



ELISA Data



Tel: 1-631-559-9269 1-516-512-3133

Email: info@creative-biomart.com Fax: 1-631-938-8127

45-1 Ramsey Road, Shirley, NY 11967, USA