

## Active Recombinant Human CD34 protein, His-tagged

**Cat. No.** CD34-652H    **Lot. No.** (See product label)

### SPECIFICATION

<b>Product Overview</b>	Recombinant Human CD34 protein(P28906-1)(Ser32-Thr290) is expressed from Expi293 with His tag at the C-terminal.
<b>Species</b>	Human
<b>Source</b>	HEK293
<b>ProteinLength</b>	Ser32-Thr290
<b>Form</b>	Lyophilized from 0.22µm filtered solution in PBS (pH 7.4). Normally 5% trehalose is added as protectant before lyophilization.
<b>Bio-activity</b>	Immobilized Human CD34, His Tag at 0.5µg/ml (100µl/Well) on the plate. Dose response curve for Anti-CD34 Antibody, hFc Tag with the EC50 of 16.5ng/ml determined by ELISA.
<b>Molecular Mass</b>	The protein has a predicted MW of 28.6 kDa. Due to glycosylation, the protein migrates to 90-130 kDa based on Tris-Bis PAGE result.
<b>Endotoxin</b>	Less than 1.0 EU per µg by the LAL method.
<b>Purity</b>	>95% as determined by SDS-PAGE. >95% as determined by SEC-MALS.
<b>Storage</b>	-20 to -80°C for 12 months as supplied from date of receipt.

 Tel: 1-631-559-9269    1-516-512-3133

 Email: [info@creative-biomart.com](mailto:info@creative-biomart.com)     Fax: 1-631-938-8127

 45-1 Ramsey Road, Shirley, NY 11967, USA

-20 to -80°C for 3-6 months in unopened state after reconstitution.

2-8°C for 2-7 days after reconstitution.

Recommend to aliquot the protein into smaller quantities for optimal storage. Please avoid freeze-thaw cycles.

#### Reconstitution

Centrifuge tubes before opening. Reconstituting to a concentration more than 100 µg/ml is recommended (usually we use 1mg/ml solution for lyophilization). Dissolve the lyophilized protein in distilled water.

## GENE INFORMATION

**Gene Name** CD34 CD34 molecule [ Homo sapiens ]

**Official Symbol** CD34

**Synonyms** CD34; CD34 molecule; CD34 antigen; hematopoietic progenitor cell antigen CD3

**Gene ID** 947

**mRNA Refseq** NM\_001025109


**Protein Refseq** NP\_001020280

**MIM** 142230

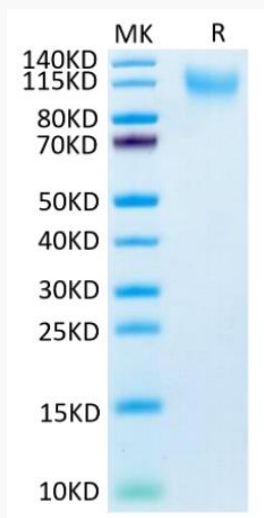
**UniProt ID** P28906

 Tel: 1-631-559-9269 1-516-512-3133

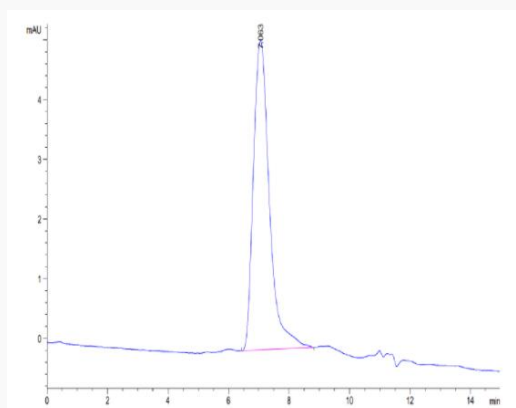
 Email: [info@creative-biomart.com](mailto:info@creative-biomart.com)  Fax: 1-631-938-8127

 45-1 Ramsey Road, Shirley, NY 11967, USA

### Tris-Bis PAGE



### SEC-HPLC

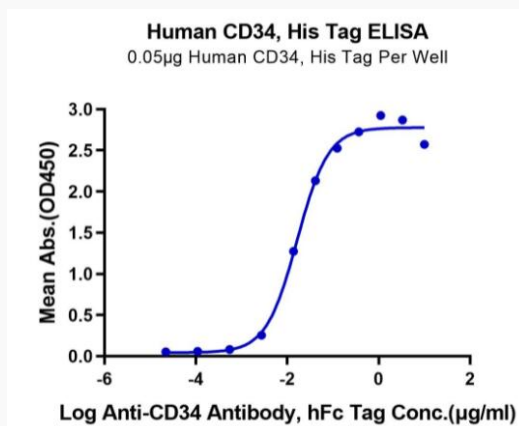


Tel: 1-631-559-9269 1-516-512-3133

Email: [info@creative-biomart.com](mailto:info@creative-biomart.com) Fax: 1-631-938-8127

45-1 Ramsey Road, Shirley, NY 11967, USA

## ELISA Data



Tel: 1-631-559-9269 1-516-512-3133

Email: [info@creative-biomart.com](mailto:info@creative-biomart.com) Fax: 1-631-938-8127

45-1 Ramsey Road, Shirley, NY 11967, USA