

Recombinant Human CD38 protein, His-tagged

Cat. No. CD38-653H **Lot. No.** (See product label)

SPECIFICATION

Product Overview	Recombinant Human CD38 protein(P28907-1)(Val43-Ile300), fused with C-terminal His tag, was expressed in HEK293.
Species	Human
Source	HEK293
ProteinLength	Val43-Ile300
Tag	C-His
Form	Lyophilized from 0.22µm filtered solution in PBS (pH 7.4). Normally 5% trehalose is added as protectant before lyophilization.
Bio-activity	Immobilized Human CD38, His Tag at 1µg/ml (100µl/Well) on the plate. Dose response curve for Anti-CD38 Antibody, hFc Tag with the EC50 of 3.7ng/ml determined by ELISA.
Molecular Mass	The protein has a predicted MW of 30.7 kDa. Due to glycosylation, the protein migrates to 45-58 kDa based on Tris-Bis PAGE result.
Endotoxin	Less than 1EU per µg by the LAL method.
Purity	> 95% as determined by Tris-Bis PAGE; > 95% as determined by HPLC

 Tel: 1-631-559-9269 1-516-512-3133


 Email: info@creative-biomart.com  Fax: 1-631-938-8127

 45-1 Ramsey Road, Shirley, NY 11967, USA

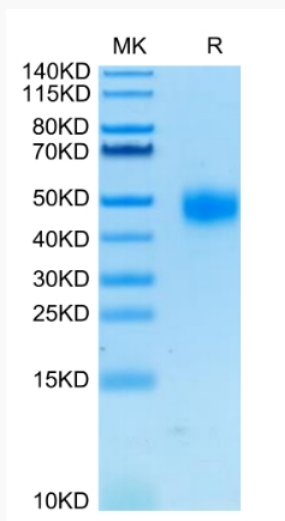
Storage	Reconstituted protein stable at -80°C for 12 months, 4°C for 1 week. Use a manual defrost freezer and avoid repeated freeze-thaw cycles.
Reconstitution	Centrifuge tubes before opening. Reconstituting to a concentration more than 100 µg/ml is recommended. Dissolve the lyophilized protein in distilled water.
GENE INFORMATION	
Gene Name	CD38 CD38 molecule [Homo sapiens]
Official Symbol	CD38
Synonyms	CD38; CD38 molecule; CD38 antigen (p45); ADP-ribosyl cyclase 1; ADP ribosyl cyclase 1; NAD(+) nucleosidase; cADPr hydrolase 1; cyclic ADP-ribose hydrolase 1; ADP-ribosyl cyclase/cyclic ADP-ribose hydrolase; T10;
Gene ID	952
mRNA Refseq	NM_001775
Protein Refseq	NP_001766
MIM	107270
UniProt ID	P28907

 Tel: 1-631-559-9269 1-516-512-3133

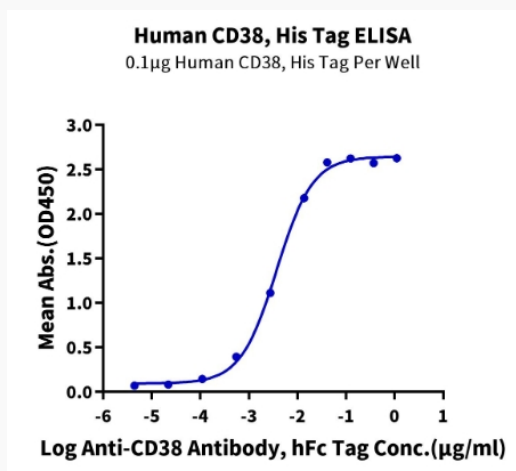
 Email: info@creative-biomart.com  Fax: 1-631-938-8127

 45-1 Ramsey Road, Shirley, NY 11967, USA

Tris-Bis PAGE



ELISA Data



Tel: 1-631-559-9269 1-516-512-3133

Email: info@creative-biomart.com Fax: 1-631-938-8127

45-1 Ramsey Road, Shirley, NY 11967, USA