

## Active Recombinant Human CD44 protein, His-tagged

**Cat. No.** CD44-3961H    **Lot. No.** (See product label)

### SPECIFICATION

<b>Product Overview</b>	Recombinant Human CD44 protein(Gln 21-Pro 220), fused with C-terminal His tag, was expressed in HEK293.
<b>Species</b>	Human
<b>Source</b>	HEK293
<b>ProteinLength</b>	Gln 21-Pro 220
<b>Tag</b>	C-His
<b>Form</b>	Liquid in sterile PBS, pH7.4.
<b>Bio-activity</b>	Immobilized Human CD44, His Tag at 5 µg/mL (100 µL/well) can bind Hyaluronan biotin sodium salt with a linear range of 39-156 ng/mL.
<b>Molecular Mass</b>	The protein has a calculated MW of 22.9 kDa. The protein migrates as 35-58 kDa under reducing condition (SDS-PAGE) due to glycosylation.
<b>Endotoxin</b>	<1.0EU per 1µg (determined by the LAL method).
<b>Purity</b>	> 95 % as determined by SDS-PAGE.
<b>Storage</b>	Store it under sterile conditions at -80°C. It is recommended that the protein be aliquoted for optimal storage. Avoid repeated freeze-thaw cycles.

 Tel: 1-631-559-9269    1-516-512-3133

 Email: [info@creative-biomart.com](mailto:info@creative-biomart.com)     Fax: 1-631-938-8127

 45-1 Ramsey Road, Shirley, NY 11967, USA

**Concentration** 1.0mg/ml.

**Reconstitution** Centrifuge the vial at 4°C before opening to recover the entire contents.

## GENE INFORMATION

**Gene Name** CD44 CD44 molecule (Indian blood group) [ Homo sapiens ]

**Official Symbol** CD44

**Synonyms**

CD44; CD44 molecule (Indian blood group); CD44 antigen (homing function and Indian blood group system) , MDU2, MDU3, MIC4; CD44 antigen; CD44R; chondroitin sulfate proteoglycan 8; CSPG8; HCELL; hematopoietic cell E and L selectin ligand; IN; MC56; Pgp1; epican; Hermes antigen; hyaluronate receptor; phagocytic glycoprotein 1; heparan sulfate proteoglycan; cell surface glycoprotein CD44; extracellular matrix receptor III; GP90 lymphocyte homing/adhesion receptor; hematopoietic cell E- and L-selectin ligand; homing function and Indian blood group system; LHR; MDU2; MDU3; MIC4; CDW44; HUTCH-I; ECMR-III; MGC10468;


**Gene ID** 960

**mRNA Refseq** NM\_000610

**Protein Refseq** NP\_000601

**MIM** 107269

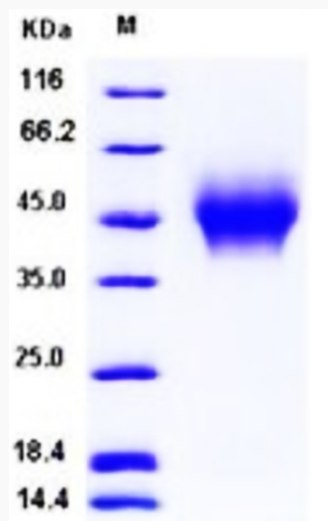
**UniProt ID** P16070

 Tel: 1-631-559-9269 1-516-512-3133

 Email: [info@creative-biomart.com](mailto:info@creative-biomart.com)  Fax: 1-631-938-8127

 45-1 Ramsey Road, Shirley, NY 11967, USA

# SDS-PAGE



Tel: 1-631-559-9269 1-516-512-3133

Email: [info@creative-biomart.com](mailto:info@creative-biomart.com) Fax: 1-631-938-8127

45-1 Ramsey Road, Shirley, NY 11967, USA