


Recombinant Human CTSC protein(Asp 25 - Leu 463), His-tagged


Cat. No. CTSC-2509H **Lot. No.** (See product label)

SPECIFICATION

Product Overview	Recombinant Human CTSC protein(Asp 25 - Leu 463)(P53634-1), fused with C-terminal His tag, was expressed in HEK293.
Species	Human
Source	HEK293
ProteinLength	Asp 25 - Leu 463
Form	Supplied as 0.2 µm filtered solution in 12.5 mM MES, 75 mM NaCl, pH6.5 with glycerol as protectant.
Bio-activity	Measured by its ability to cleave the fluorogenic peptide substrate, Gly-Arg-7-amido-4-methylcoumarin (GRAMC). The specific activity is >5000 pmol/min/µg.
Molecular Mass	The protein has a calculated MW of 51.4 kDa. The protein migrates as 60-65 kDa when calibrated against Star Ribbon Pre-stained Protein Marker under reducing (R) condition (SDS-PAGE) due to glycosylation.
Endotoxin	Less than 1.0 EU per ug by the LAL method.
Purity	>95% as determined by SDS-PAGE. >90% as determined by SEC-MALS.

 Tel: 1-631-559-9269 1-516-512-3133

 Email: info@creative-biomart.com  Fax: 1-631-938-8127

 45-1 Ramsey Road, Shirley, NY 11967, USA

Storage

For long term storage, the product should be stored at lyophilized state at -20°C or lower.

Please avoid repeated freeze-thaw cycles.

This product is stable after storage at:

-20°C to -70°C for 12 months in lyophilized state;

-70°C for 3 months under sterile conditions after reconstitution.

Reconstitution

It is recommended that sterile water be added to the vial to prepare a stock solution of 0.2 ug/ul. Centrifuge the vial at 4°C before opening to recover the entire contents.

GENE INFORMATION

Gene Name CTSC cathepsin C [Homo sapiens]

Official Symbol CTSC

Synonyms CTSC; cathepsin C; PALS, PLS; dipeptidyl peptidase 1; DPP1; cathepsin J; dipeptidyl peptidase I; dipeptidyl transferase; dipeptidyl-peptidase I; JP; HMS; JPD; PLS; CPPI; DPPI; PALS; DPP-I;

Gene ID 1075

mRNA Refseq NM_001114173

Protein Refseq NP_001107645

MIM 602365

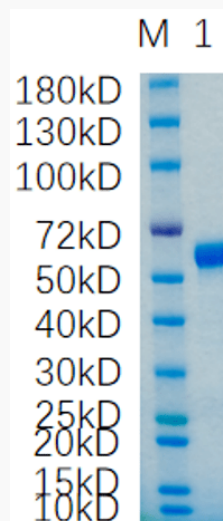
UniProt ID P53634


 Tel: 1-631-559-9269 1-516-512-3133

 Email: info@creative-biomart.com  Fax: 1-631-938-8127


 45-1 Ramsey Road, Shirley, NY 11967, USA

SDS-PAGE



 Tel: 1-631-559-9269 1-516-512-3133

 Email: info@creative-biomart.com  Fax: 1-631-938-8127

 45-1 Ramsey Road, Shirley, NY 11967, USA