

Recombinant Mouse CD33 Antigen, Fc-tagged

Cat. No. Cd33-6889M **Lot. No.** (See product label)

SPECIFICATION

Product Overview	A DNA sequence encoding the extracellular domain of mouse Cd33 (Met 1 - Glu 240) was fused with the Fc region of human IgG1 at the C-terminus. It comprises 465 amino acids and has a calculated molecular mass of 51.6 kDa.
Description	Mouse myeloid cell surface antigen Cd33 is a single-pass type I membrane protein which belongs to the immunoglobulin superfamily and SIGLEC (sialic acid binding Ig-like lectin) family. Cd33 contains 1 Ig-like C2-type (immunoglobulin-like) domain and one Ig-like V-type (immunoglobulin-like) domain.
Source	Human Cells
Species	Mouse
Tag	Fc
Predicted N Terminal	Gln 17
Form	Lyophilized from sterile PBS, pH 7.4. Normally 5 % - 8 % trehalose and mannitol are added as protectants before lyophilization. Specific concentrations are included in the hardcopy of COA.
Molecular Mass	The secreted recombinant mouse Cd33 / Fc is a disulfide-linked homodimer. The reduced monomer comprises 465 amino acids and has a calculated molecular mass of 51.6 kDa. As a result of glycosylation, the apparent molecular mass of rm CD33 / Fc monomer is approximately 55 - 60 kDa in SDS-PAGE under reducing conditions.

 Tel: 1-631-559-9269 1-516-512-3133

 Email: info@creative-biomart.com  Fax: 1-631-938-8127

 45-1 Ramsey Road, Shirley, NY 11967, USA


Protein length	465aa
Endotoxin	1.0 eu/μg of the protein as determined by the lal
Purity	>90 % as determined by SDS-PAGE.
Stability	Samples are stable for up to twelve months from date of receipt at -70 °C.
Storage	Store it under sterile conditions at -70°C. It is recommended that the protein be aliquoted for optimal storage. Avoid repeated freeze-thaw cycles.

GENE INFORMATION

Gene Name	Cd33 CD33 antigen [<i>Mus musculus</i>]
Official Symbol	Cd33
Synonyms	CD33; CD33 antigen; myeloid cell surface antigen CD33; sialic acid-binding Ig-like lectin 3; gp67; Siglec-3;
Gene ID	12489
mRNA Refseq	NM_001111058
Protein Refseq	NP_001104528
Pathway	Hematopoietic cell lineage, organism-specific biosystem; Hematopoietic cell lineage, conserved biosystem;
Function	sugar binding;

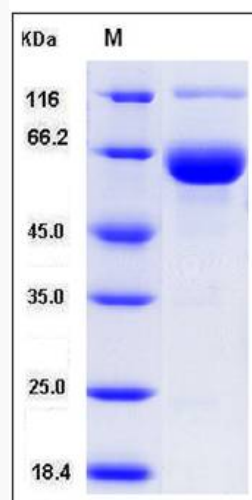
 Tel: 1-631-559-9269 1-516-512-3133

 Email: info@creative-biomart.com  Fax: 1-631-938-8127

 45-1 Ramsey Road, Shirley, NY 11967, USA

IMAGE

Cd33 protein :



Tel: 1-631-559-9269 1-516-512-3133

Email: info@creative-biomart.com Fax: 1-631-938-8127

45-1 Ramsey Road, Shirley, NY 11967, USA