

# Recombinant Mouse Epcam protein, His-tagged

**Cat. No.** Epcam-283M    **Lot. No.** (See product label)

## SPECIFICATION

<b>Product Overview</b>	Recombinant Mouse Epcam (Gln24-Thr266) protein was fused to His-tag at C-terminus and expressed in human 293 cells (HEK293).
<b>Species</b>	Mouse
<b>Source</b>	HEK293
<b>ProteinLength</b>	Gln24-Thr266
<b>Description</b>	<p>EpCAM is also known as CO171A, EGP, EGP40,GA7332, KSA, M4S, MIC18, MK1, TROP1, hEGP2, and is a pan-epithelial differentiation antigen that is expressed on almost all carcinomas as 17-1A(mAb) antigen. Its constitutional function is being elucidated. It is intricately linked with the Cadherin-Catenin pathway and hence the fundamental WNT pathway responsible for intracellular signaling and polarity. The epithelial cell adhesion molecule (Ep-CAM) is known to express in most epithelial malignancies and was reported as a tumor marker or a candidate of molecular targeting therapy.</p> <p>Ep-CAM cross signaling with N-cadherin involves Pi3K, resulting in the abrogation of the cadherin adhesion complexes in epithelial cells was reported. And Epithelial cell adhesion molecule (Ep-CAM) recently received increased attention as a prognostic factor in breast cancer.</p>
<b>Predicted N Terminal</b>	Gln24
<b>Form</b>	Lyophilized from 0.22

 Tel: 1-631-559-9269    1-516-512-3133

 Email: [info@creative-biomart.com](mailto:info@creative-biomart.com)     Fax: 1-631-938-8127

 45-1 Ramsey Road, Shirley, NY 11967, USA

	µm filtered solution in PBS, pH7.4, 10% trehalose.
<b>Molecular Mass</b>	The protein has a calculated MW of 28.5 kDa. The protein migrates as 33-38 kDa under reducing (R) condition (SDS-PAGE) due to glycosylation.
<b>Endotoxin</b>	Less than 1.0 EU per µg by the LAL method.
<b>Purity</b>	>98% as determined by SDS-PAGE.
<b>Storage</b>	<p>For long term storage, the product should be stored at lyophilized state at -20 centigrade or lower.</p> <p>Please avoid repeated freeze-thaw cycles.</p> <p>This product is stable after storage at:</p> <p>-20 to -70 centigrade for 12 months in lyophilized state;</p> <p>-70 centigrade for 3 months under sterile conditions after reconstitution.</p>
<b>Reconstitution</b>	It is recommended that sterile water be added to the vial to prepare a stock solution of 0.2 ug/ul. Centrifuge the vial at 4°C before opening to recover the entire contents.

## GENE INFORMATION

<b>Gene Name</b>	<b>Epcam</b>
<b>Official Symbol</b>	<b>Epcam</b>
<b>Synonyms</b>	EPCAM; epithelial cell adhesion molecule; mEGP314; protein 289A; Trop-1 protein; lymphocyte antigen 74; epithelial glycoprotein 314; panepithelial glycoprotein 314; tumor-associated calcium signal transducer 1; EGP; Ly74; gp40; CD326; EGP-2; TROP1; Egp314; Ep-CAM; Tacsd1; GA733-2; Tacstd1
<b>Gene ID</b>	<b>17075</b>

 Tel: 1-631-559-9269 1-516-512-3133

 Email: [info@creative-biomart.com](mailto:info@creative-biomart.com)  Fax: 1-631-938-8127

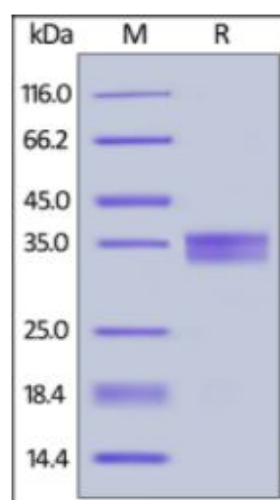
 45-1 Ramsey Road, Shirley, NY 11967, USA

**mRNA Refseq** [NM\\_008532](#)


**Protein Refseq** [NP\\_032558](#)

**UniProt ID** [Q99JW5](#)


**SDS-PAGE of  
Epcam-283M**



Mouse EpCAM, His Tag on SDS-PAGE under reducing (R) condition. The gel was stained overnight with Coomassie Blue. The purity of the protein is greater than 98%.

 Tel: 1-631-559-9269 1-516-512-3133

 Email: [info@creative-biomart.com](mailto:info@creative-biomart.com)  Fax: 1-631-938-8127

 45-1 Ramsey Road, Shirley, NY 11967, USA