

Recombinant Human GPC3 protein (S359F), His-tagged, low endotoxin

Cat. No. GPC3-2246H **Lot. No.** (See product label)

SPECIFICATION


Product Overview	Recombinant Human GPC3 (S359F, Gln25-His559)(low endotoxin) protein was fused to His-tag at C-terminus and expressed in human 293 cells (HEK293).
Species	Human
Source	HEK293
ProteinLength	Gln25-His559
Description	Glypican-3 (GPC3) is also known as Intestinal protein OCI-5, GTR2-2, MXR7, which belongs to the glypican family. Glypican 3/GPC-3 is highly expressed in lung, liver and kidney. Glypican-3 inhibits the dipeptidyl peptidase activity of DPP4. Glypican-3 may be involved in the suppression/modulation of growth in the predominantly mesodermal tissues and organs, and also may play a role in the modulation of IGF2 interactions with its receptor and thereby modulate its function.
Predicted N Terminal	Gln25
Form	Lyophilized from 0.22 µm filtered solution in PBS, pH7.4, 10% trehalose.
Molecular Mass	The protein has a calculated MW of 61.7 kDa. The protein migrates as 66-115 kDa under reducing (R) condition (SDS-PAGE) due to glycosylation.
Endotoxin	Less than 0.1 EU per µg by the LAL method.

 Tel: 1-631-559-9269 1-516-512-3133

 Email: info@creative-biomart.com  Fax: 1-631-938-8127

 45-1 Ramsey Road, Shirley, NY 11967, USA

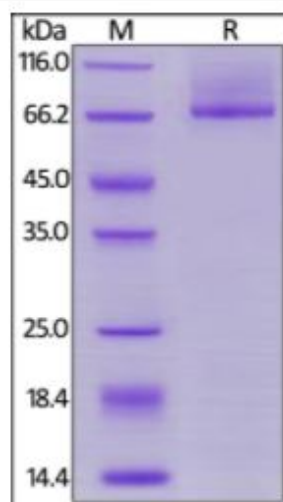
Purity	>90% as determined by SDS-PAGE.
Storage	<p>For long term storage, the product should be stored at lyophilized state at -20 centigrade or lower.</p> <p>Please avoid repeated freeze-thaw cycles.</p> <p>This product is stable after storage at:</p> <p>-20 to -70 centigrade for 12 months in lyophilized state;</p> <p>-70 centigrade for 3 months under sterile conditions after reconstitution.</p>
Reconstitution	It is recommended that sterile water be added to the vial to prepare a stock solution of 0.2 ug/ul. Centrifuge the vial at 4°C before opening to recover the entire contents.
GENE INFORMATION	
Gene Name	GPC3
Official Symbol	GPC3
Synonyms	GPC3; glypican 3; SDYS; glypican-3; DGSX; glypican proteoglycan 3; OCI 5; SGB; SGBS; SGBS1; secreted glypican-3; intestinal protein OCI-5; heparan sulphate proteoglycan; MXR7; OCI-5; GTR2-2
Gene ID	2719
mRNA Refseq	NM_001164617
Protein Refseq	NP_001158089
MIM	300037
UniProt ID	P51654

 Tel: 1-631-559-9269 1-516-512-3133

 Email: info@creative-biomart.com  Fax: 1-631-938-8127

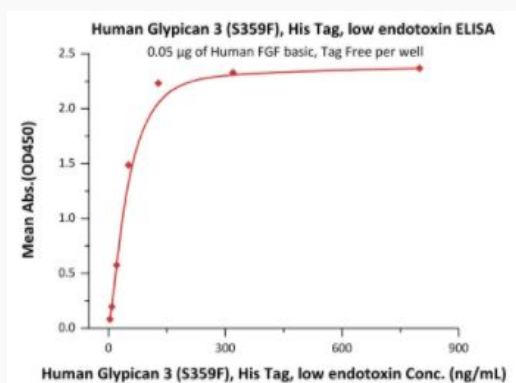
 45-1 Ramsey Road, Shirley, NY 11967, USA

SDS-PAGE of GPC3-2246H



Human Glypican 3 (S359F), His Tag, low endotoxin on SDS-PAGE under reducing (R) condition. The gel was stained overnight with Coomassie Blue. The purity of the protein is greater than 90%.

Bioactivity-ELISA of GPC3-2246H



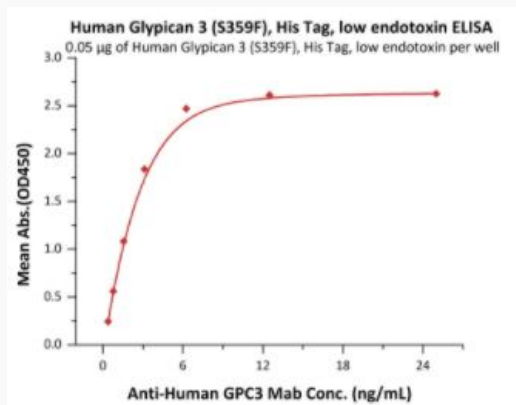
Immobilized Human FGF basic, Tag Free at 0.5 µg/mL (100 µL/well) can bind Human Glypican 3 (S359F), His Tag, low endotoxin with a linear range of 3-128 ng/mL (QC tested).

Tel: 1-631-559-9269 1-516-512-3133

Email: info@creative-biomart.com Fax: 1-631-938-8127

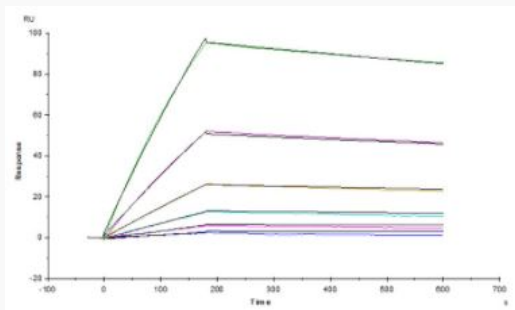
45-1 Ramsey Road, Shirley, NY 11967, USA

Bioactivity-ELISA



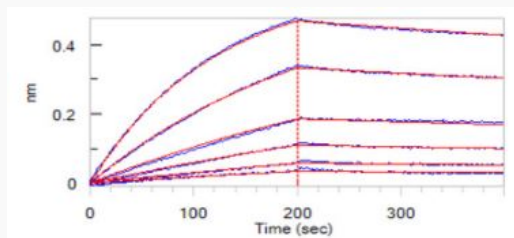
Immobilized Human Glypican 3 (S359F), His Tag, low endotoxin at 0.5 µg/mL (100 µL/well) can bind Anti-Human GPC3 Mab with a linear range of 0.4-3 ng/mL (Routinely tested).

Bioactivity-SPR of GPC3-2246H



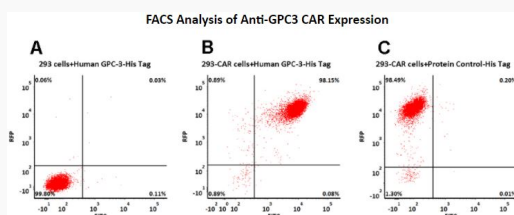
Anti-Human GPC3 MAb (chimeric mouse-human IgG1) captured on CM5 chip via anti-human IgG Fc antibodies surface, can bind Human Glypican 3 (S359F), His Tag, low endotoxin with an affinity constant of 1.96 nM as determined in a SPR assay (Biacore T200) (Routinely tested).

Bioactivity-BLI of GPC3-2246H



Loaded Anti-Human GPC3 MAb (chimeric mouse-human IgG1) on AHC Biosensor, can bind Human Glypican 3 (S359F), His Tag, low endotoxin with an affinity constant of 3.04 nM as determined in BLI assay (ForteBio Octet Red96e) (Routinely tested).

Evaluation of CAR expression of GPC3- 2246H



293 cells were transfected with anti-GPC3-scFv and RFP tag. 2e5 of the cells were first stained with B. Human Glypican 3 (S359F), His Tag, low endotoxin and C. His tag protein control, followed by FITC-conjugated anti-6xHis tag antibody. A. Non-transfected 293 cells and C. His tag protein control were used as negative control. RFP was used to evaluate CAR (anti-GPC3-scFv) expression and FITC was used to evaluate the binding activity of Human Glypican 3 (S359F), His Tag, low endotoxin (Cat. No. GP3-H5223).