

Recombinant Human IL17F protein, His-tagged

Cat. No. IL17F-377H **Lot. No.** (See product label)

SPECIFICATION

Product Overview	Recombinant Human IL17F protein(Q96PD4)(Arg31-Gln163), fused with C-terminal His tag, was expressed in HEK293.
Species	Human
Source	HEK293
ProteinLength	Arg31-Gln163
Tag	C-His
Form	Lyophilized from 0.22µm filtered solution in PBS (pH 7.4). Normally 5% trehalose is added as protectant before lyophilization.
Bio-activity	Immobilized Human IL-17F, His Tag at 5µg/ml (100µl/well) on the plate. Dose response curve for Human IL-17 R alpha, hFc Tag with the EC50 of 0.63µg/ml determined by ELISA.
Molecular Mass	The protein has a predicted MW of 17.5 kDa. Due to glycosylation, the protein migrates to 23-28 kDa based on Tris-Bis PAGE result.
Endotoxin	Less than 1EU per µg by the LAL method.
Purity	> 95% as determined by Tris-Bis PAGE; > 95% as determined by HPLC

 Tel: 1-631-559-9269 1-516-512-3133


 Email: info@creative-biomart.com  Fax: 1-631-938-8127

 45-1 Ramsey Road, Shirley, NY 11967, USA

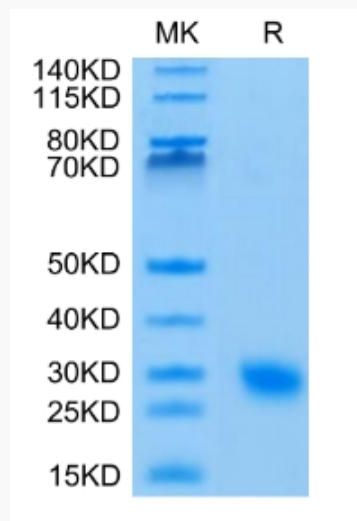
Storage	Reconstituted protein stable at -80°C for 12 months, 4°C for 1 week. Use a manual defrost freezer and avoid repeated freeze-thaw cycles.
Reconstitution	Centrifuge tubes before opening. Reconstituting to a concentration more than 100 µg/ml is recommended. Dissolve the lyophilized protein in distilled water.
GENE INFORMATION	
Gene Name	IL17F interleukin 17F [Homo sapiens]
Official Symbol	IL17F
Synonyms	IL17F; interleukin 17F; interleukin-17F; IL 17F; ML 1; ML1; IL-24; cytokine ML-1; mutant IL-17F; interleukin-24; ML-1; CANDF6; IL-17F;
Gene ID	112744
mRNA Refseq	NM_052872
Protein Refseq	NP_443104
MIM	606496
UniProt ID	Q96PD4

 Tel: 1-631-559-9269 1-516-512-3133

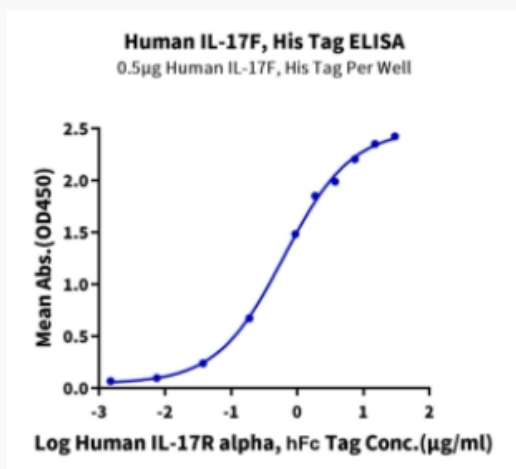
 Email: info@creative-biomart.com  Fax: 1-631-938-8127

 45-1 Ramsey Road, Shirley, NY 11967, USA

Tris-Bis PAGE



ELISA Data



Tel: 1-631-559-9269 1-516-512-3133

Email: info@creative-biomart.com Fax: 1-631-938-8127

45-1 Ramsey Road, Shirley, NY 11967, USA