

## Recombinant Human IL21 protein

**Cat. No.** IL21-371H    **Lot. No.** (See product label)

### SPECIFICATION

<b>Product Overview</b>	Recombinant Human IL21 protein was expressed in Escherichia coli.
<b>Species</b>	Human
<b>Source</b>	E.coli
<b>ProteinLength</b>	133
<b>Description</b>	<p>Human IL-21 is encoded by IL-21 gene located on Chr. 4. It is a pleiotropic cytokine produced by CD4+ T cells in response to antigenic stimulation and can regulating immune system cells, for instance cytotoxin T cells and natural killer cells.</p> <p>Additionally, it can induce target cells division or proliferation. IL-21 elicits its effect through binding to IL-21R, which also contains the gamma chain found in other cytokine receptors such as IL-2, IL-4, IL-7, IL-9 and IL-15. IL-21/IL-21R interaction triggers a cascade of events which includes activation of the tyrosine kinases JAK1 and JAK3, followed by activation of the transcription factors STAT1 and STAT3. IL-21 shows having much relation with clinical illnesses, including cancer immunotherapy, viral infections and allergies.</p>
<b>Form</b>	Lyophilized from a 0.2µm filtered concentrated solution in PBS, pH 7.4.
<b>Bio-activity</b>	Fully biologically active when compared to standard. The ED50 as determined by a cell proliferation assay using human N1186 T cells is less than 20 ng/ml, corresponding to a specific activity of $> 5.0 \times 10^4$ IU/mg.

 Tel: 1-631-559-9269    1-516-512-3133

 Email: [info@creative-biomart.com](mailto:info@creative-biomart.com)     Fax: 1-631-938-8127

 45-1 Ramsey Road, Shirley, NY 11967, USA

<b>Molecular Mass</b>	Approximately 15.4 kDa, a single non-glycosylated polypeptide chain containing 133 amino acids.
<b>AA Sequence</b>	QQQDRHMIRMRLIDIVDQLKNYVNDLVPEFLPAPEDVETNCEWSAFSCFQKAQLK SANTGNNERIINVSIKKLKRKPPSTNAGRRQKHRLTCPSCDSYEKKPPKEFLERFKSL LQKMIHQHLSSRTHGSEDS
<b>Endotoxin</b>	Less than 1 EU/g of rHuIL-21 as determined by LAL method.
<b>Purity</b>	>97% by SDS-PAGE and HPLC analysis.
<b>Storage</b>	Use a manual defrost freezer and avoid repeated freeze-thaw cycles. 12 months from date of receipt, -20 to -70 centigrade as supplied. 1 month, 2 to 8 centigrade under sterile conditions after reconstitution. 3 months, -20 to -70 centigrade under sterile conditions after reconstitution.
<b>Reconstitution</b>	We recommend that this vial be briefly centrifuged prior to opening to bring the contents to the bottom. Reconstitute in sterile distilled water or aqueous buffer containing 0.1 % BSA to a concentration of 0.1-1.0 mg/mL. Stock solutions should be apportioned into working aliquots and stored at ≤-20 centigrade. Further dilutions should be made in appropriate buffered solutions.

## GENE INFORMATION

<b>Gene Name</b>	IL21
<b>Official Symbol</b>	IL21
<b>Synonyms</b>	IL21; interleukin 21; interleukin-21; IL 21; Za11; interleukin-21 isoform; IL-21;
<b>Gene ID</b>	59067

 Tel: 1-631-559-9269 1-516-512-3133

 Email: [info@creative-biomart.com](mailto:info@creative-biomart.com)  Fax: 1-631-938-8127

 45-1 Ramsey Road, Shirley, NY 11967, USA

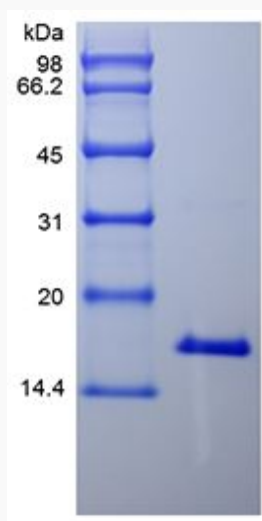
mRNA Refseq [NM\\_001207006](#)

Protein Refseq [NP\\_001193935](#)

MIM [605384](#)

UniProt ID [Q9HBE4](#)

SDS-PAGE of IL21-  
371H



Tel: 1-631-559-9269 1-516-512-3133

Email: [info@creative-biomart.com](mailto:info@creative-biomart.com) Fax: 1-631-938-8127

45-1 Ramsey Road, Shirley, NY 11967, USA