

Recombinant Human IL3RA protein, His-tagged

Cat. No. IL3RA-3178H **Lot. No.** (See product label)

SPECIFICATION

Product Overview	Recombinant Human IL3RA Protein(P26951-1)(Thr19-Arg305) is expressed from HEK293 with His tag at the C-Terminus.
Species	Human
Source	HEK293
ProteinLength	1-305 a.a.
Form	Lyophilized from 0.22µm filtered solution in PBS (pH 7.4). Normally 8% trehalose is added as protectant before lyophilization.
Bio-activity	Immobilized Human IL-3 R alpha, His Tag at 0.5µg/ml (100µl/Well) on the plate. Dose response curve for Anti-IL-3 R alpha Antibody, hFc Tag with the EC50 of 13.3ng/ml determined by ELISA.
Molecular Mass	The protein has a predicted MW of 33.9 kDa. Due to glycosylation, the protein migrates to 60-70 kDa based on Tris-Bis PAGE result.
Endotoxin	Less than 1EU per µg by the LAL method.
Purity	> 95% as determined by Tris-Bis PAGE
Storage	-20 to -80°C for 12 months as supplied from date of receipt. -80°C for 3-6 months after reconstitution.

 Tel: 1-631-559-9269 1-516-512-3133

 Email: info@creative-biomart.com  Fax: 1-631-938-8127

 45-1 Ramsey Road, Shirley, NY 11967, USA

2-8°C for 2-7 days after reconstitution.

Recommend to aliquot the protein into smaller quantities for optimal storage. Please minimize freeze-thaw cycles.

Reconstitution

Centrifuge the tube before opening. Reconstituting to a concentration more than 100 µg/ml is recommended. Dissolve the lyophilized protein in distilled water.

GENE INFORMATION

Gene Name IL3RA interleukin 3 receptor, alpha (low affinity) [Homo sapiens]

Official Symbol IL3RA

Synonyms

IL3RA; interleukin 3 receptor, alpha (low affinity); interleukin-3 receptor subunit alpha; CD123; IL-3RA; IL-3R-alpha; CD123 antigen; IL-3R subunit alpha; IL-3 receptor subunit alpha; IL-3 receptor alpha SP2 isoform; IL3R; IL3RX; IL3RY; IL3RAY; hIL-3Ra; MGC34174

Gene ID 3563

mRNA Refseq NM_002183

Protein Refseq NP_002174

MIM 308385

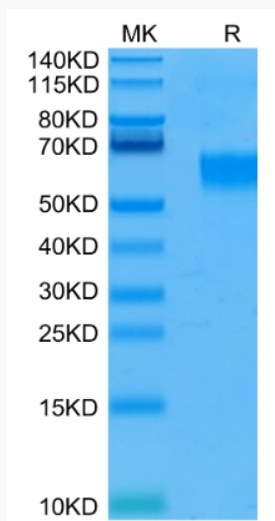
UniProt ID P26951

 Tel: 1-631-559-9269 1-516-512-3133

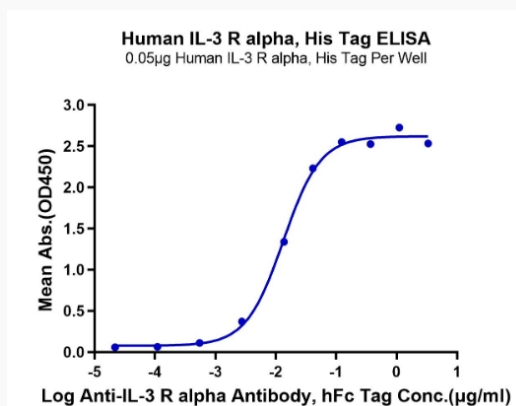
 Email: info@creative-biomart.com  Fax: 1-631-938-8127

 45-1 Ramsey Road, Shirley, NY 11967, USA

Tris-Bis PAGE



ELISA Data



Tel: 1-631-559-9269 1-516-512-3133

Email: info@creative-biomart.com Fax: 1-631-938-8127

45-1 Ramsey Road, Shirley, NY 11967, USA