

Recombinant Human NTRK2 protein, His-tagged

Cat. No. NTRK2-157H **Lot. No.** (See product label)

SPECIFICATION

Product Overview	Recombinant Human NTRK2 protein(AAH31835)(Cys32-His430), fused with C-terminal His tag, was expressed in HEK293.
Species	Human
Source	HEK293
ProteinLength	Cys32-His430
Tag	C-His
Form	Supplied as 0.22µm filtered solution in PBS (pH 7.4).
Bio-activity	Immobilized Human/Murine/Rat BDNF, No Tag at 1µg/ml (100µl/well) on the plate. Dose response curve for Human TrkB, His Tag with the EC50 of 0.24µg/ml determined by ELISA.
Molecular Mass	The protein has a predicted MW of 45.2 kDa. Due to glycosylation, the protein migrates to 65-80 kDa based on Tris-Bis PAGE result.
Endotoxin	Less than 1EU per µg by the LAL method.
Purity	> 95% as determined by Tris-Bis PAGE; > 95% as determined by HPLC
Storage	Valid for 12 months from date of receipt when stored at -80°C; Recommend to aliquot

 Tel: 1-631-559-9269 1-516-512-3133

 Email: info@creative-biomart.com  Fax: 1-631-938-8127

 45-1 Ramsey Road, Shirley, NY 11967, USA

the protein into smaller quantities for optimal storage. Please do not repeated freeze-thaw cycles.

Reconstitution

It is recommended that sterile water be added to the vial to prepare a stock solution of 0.2 ug/ul. Centrifuge the vial at 4°C before opening to recover the entire contents.

GENE INFORMATION

Gene Name NTRK2 neurotrophic tyrosine kinase, receptor, type 2 [Homo sapiens]

Official Symbol NTRK2

Synonyms

NTRK2; neurotrophic tyrosine kinase, receptor, type 2; BDNF/NT-3 growth factors receptor; TRKB; trkB tyrosine kinase; tyrosine kinase receptor B; tropomyosin-related kinase B; BDNF-tropomyosine receptor kinase B; trk-B; GP145-TrkB;

Gene ID 4915

mRNA Refseq NM_001007097

Protein Refseq NP_001007098

MIM 600456

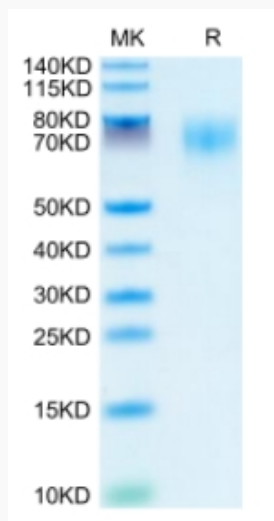
UniProt ID Q16620

 Tel: 1-631-559-9269 1-516-512-3133

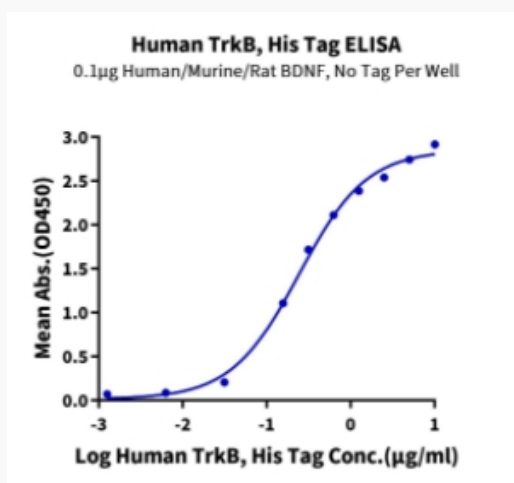
 Email: info@creative-biomart.com  Fax: 1-631-938-8127

 45-1 Ramsey Road, Shirley, NY 11967, USA

Tris-Bis PAGE



ELISA Data



Tel: 1-631-559-9269 1-516-512-3133

Email: info@creative-biomart.com Fax: 1-631-938-8127

45-1 Ramsey Road, Shirley, NY 11967, USA